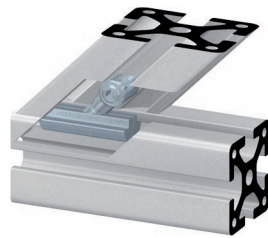
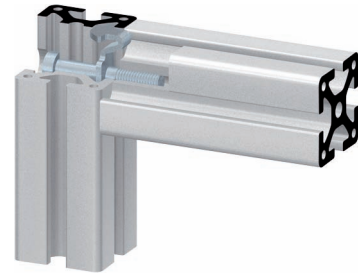

**Zentralspanner**

- für hohe statische Belastungen
- universell einsetzbar durch verschiedene Ankervarianten
- kraftschlüssige Verbindungen
- formschlüssiges Einsetzen von Flächenelementen möglich


**Central Fasteners**

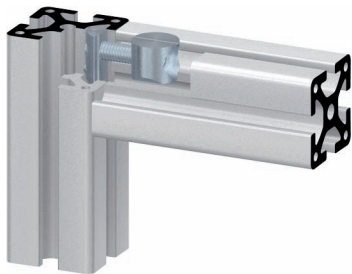
- for high static loads
- universal applications when using the range of anchors
- positive locking


**Formverbinder**

- universell einsetzbar, mit integrierter Verdrehsicherung
- preiswerte Verbindung
- einfache Montage
- kraft- und formschlüssige Verbindung
- Formstabilisierung in der Nut

**Standard Fasteners**

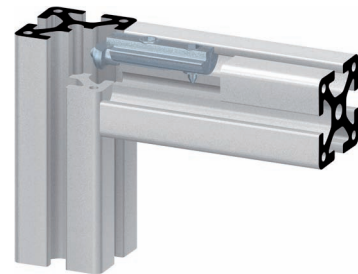
- universal application with anti-twist-feature
- inexpensive and simple connection
- simple assembly
- positive locking


**Universalspanner**

- für hohe statische Belastungen
- universell einsetzbar durch Einsatz unterschiedlicher Nutensteine
- kraftschlüssige Verbindung

**Universal Fasteners**

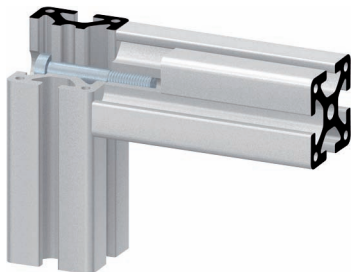
- for high static loads
- universally insertable by using different t-nuts
- positive locking


**Schnellspanner**

- verdrehsichert durch überstehendes Spanngehäuse
- keine Profilbearbeitung erforderlich
- einfache Montage

**Quick Fasteners**

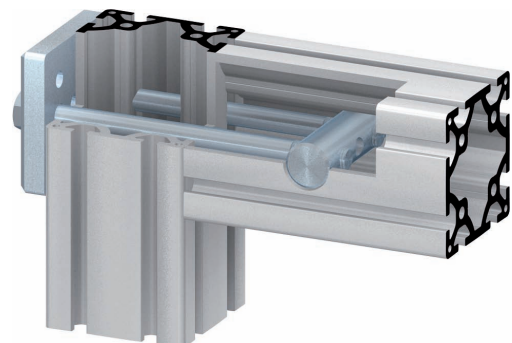
- anti-twist-feature
- no machining required
- simple assembly


**Schraubverbinder M 8**

- hoch statische und dynamische Belastbarkeit
- kraft- und formschlüssige Verbindung
- Verdrehsicherung durch Fixierstück bei Einsatz einer Schraube

**Screw Fastener M 8**

- for high static and dynamic loads
- locator block prevents twisting, when using only one screw


**Formschlussverbinder**

- für stabile Verbindungen großer Profile mit hohen Belastungen
- hoch statisch und dynamisch belastbar

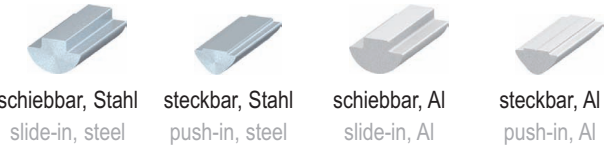
**Heavy Duty Fasteners**

- stable and positive attachment of big profiles
- for high static and dynamic loads



schiebbar slide-in    steckbar (Edelstahl) push-in (stainless-steel)    Stahl / PA steel / PA    mini (Edelstahl) mini (stainless-steel)

**Nutensteine, Kugel**  
T-Nuts, ball-type



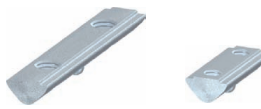
schiebbar, Stahl slide-in, steel    steckbar, Stahl push-in, steel    schiebbar, Al slide-in, Al    steckbar, Al push-in, Al

**Nutensteinprofile**  
T-Nut Profiles



schiebbar slide-in    steckbar push-in

**Nutensteine, mit Gewindestift**  
T-Nuts, with grub screw



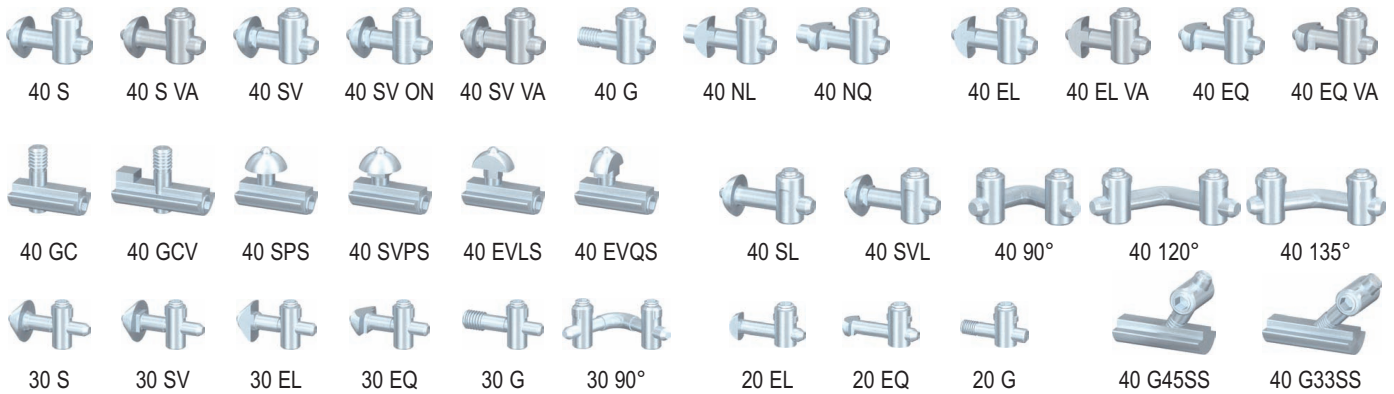
schiebbar slide-in    steckbar push-in

- Positionierung in der Nut durch federndes Druckstück oder Gewindestift
- einschiebbare und einschwenkbare Nutensteinausführung
- Gewindebohrungen M3 bis M8

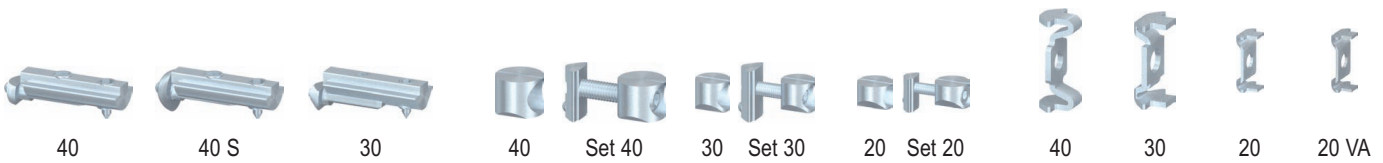
- positioning in the t-slot via spring-loaded ball or grub screw
- slide-in and push-in t-nut design
- threaded holes from M3 up to M8

**Doppelnutensteine**  
Double T-Nuts

**Rautennutensteine**  
Square T-Nuts



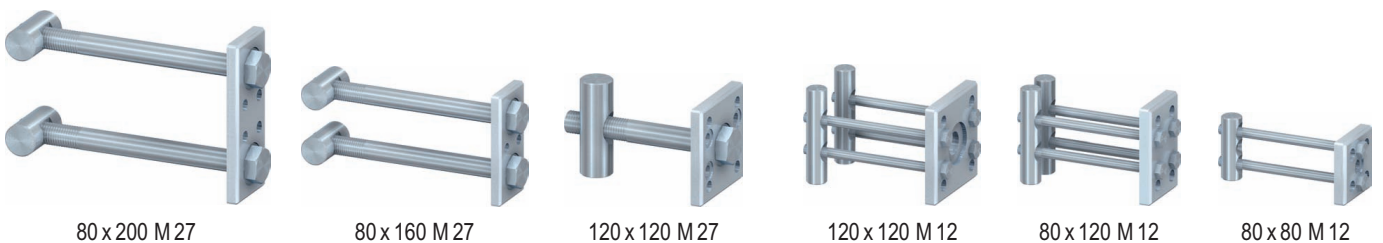
**Zentralspanner**  
Central Fasteners



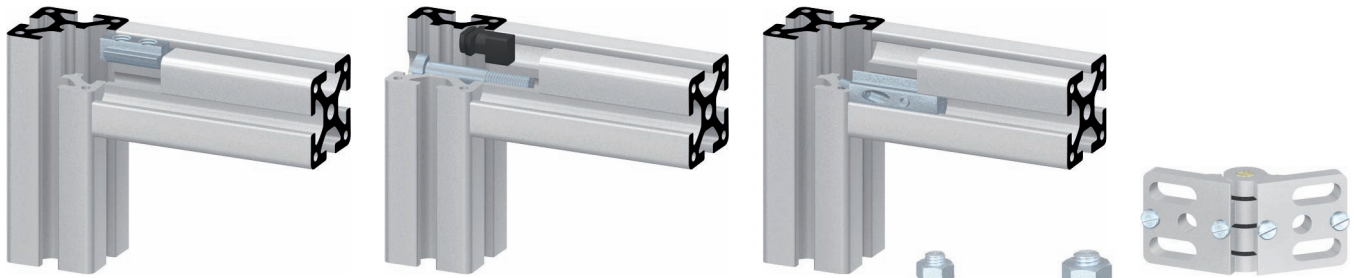
**Schnellspanner**  
Quick Fasteners

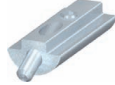
**Universalspanner**  
Universal Fasteners

**Formverbinder**  
Standard Connectors

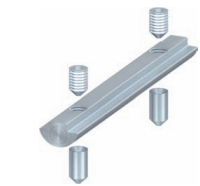
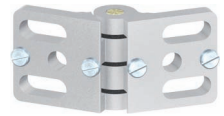
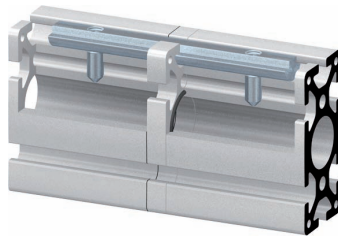
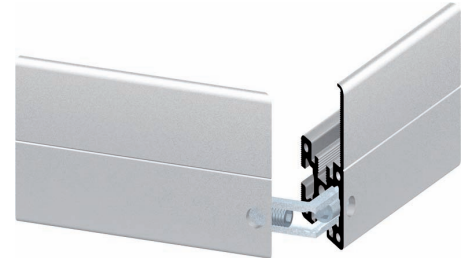
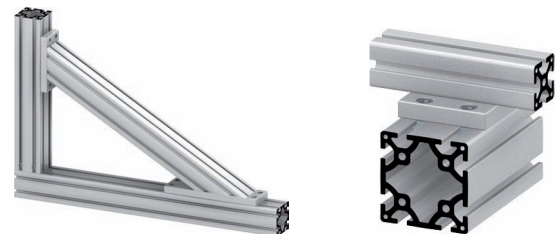
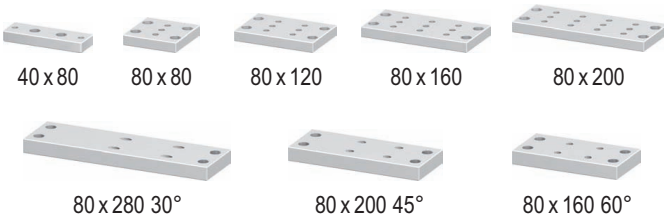


**Formschlussverbinder**  
Heavy Duty Fasteners

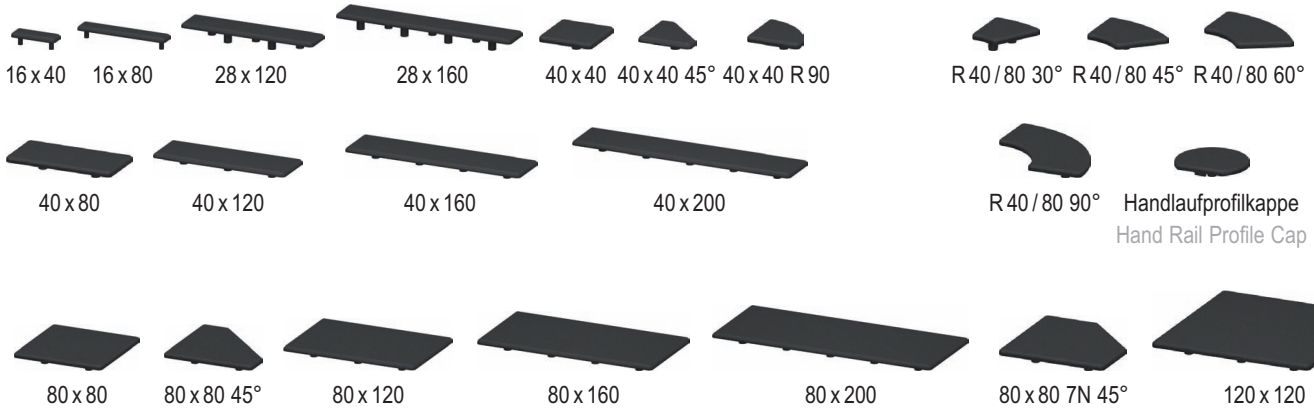

 Spezial-Nutenstein  
Special T-Nut

 Fixierstück  
Locator Block

 Verstiftungselement  
Anti-Twist T-Nut

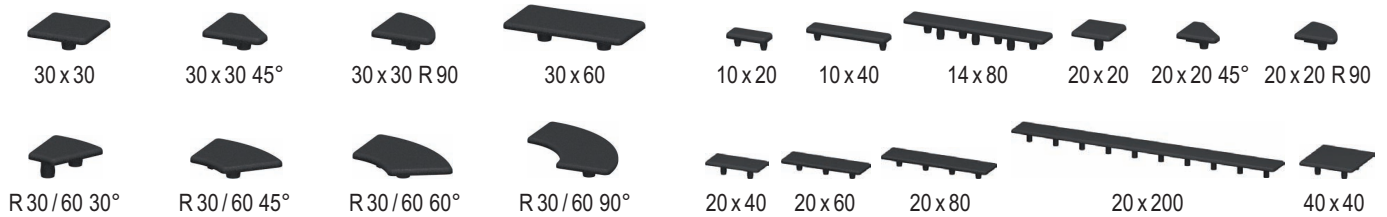
 Verdrehsicherungsschraube  
Anti-Twist Set Screw

 Ankerschrauben M6, M8  
Attachment Screws M6, M8

 Pneumatikverbinder 40  
Pneumatic Connector 40

 Gehrungsverbinder 40 90°  
Miter Connector 40 90°

**Sondernutensteine, Zubehör**  
Special T-Nuts, Accessories

**Verbindungsplatten**  
Attachment Plates

**Treppenverbinder**  
Step Fasteners

**Abdeckkappen 40**  
Profile Caps 40



**Abdeckkappen 30**  
Profile Caps 30



**Abdeckkappen Inch-Profile**  
Inch Profile Caps

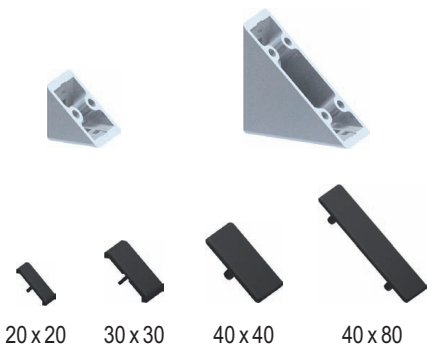


**Abdeckkappen Befestigungswinkel 40 x 40**  
Corner Fastener Caps 40 x 40

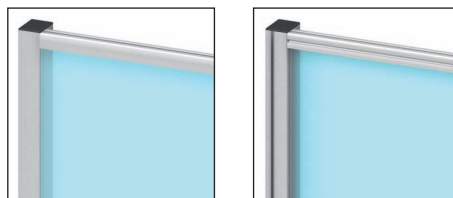
**Abdeckkappen 20**  
Profile Caps 20



**Abdeckkappen Kabelkanal**  
Wiring Duct Caps



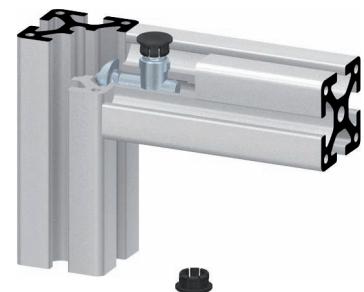
**Abdeckkappen Zn Winkel**  
Zn Corner Bracket Caps



Schutzzaunankerplatte 60 x 80  
Support Leg Profile Cap 60 x 80



Abdeckkappensatz Griffleistenprofil 30 x 40  
Profile Cap Set for handle strip profile 30 x 40



Abdeckkappe SV-Bohrung  
SV Drilling Cap





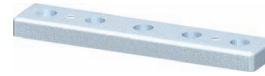
40 x 80



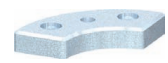
40 x 120



40 x 160

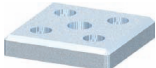


40 x 200

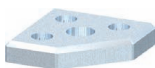


R40 x 80 90°

**Fußplatten 40, verzinkt**  
**Foot Plates 40, zinc-plated**



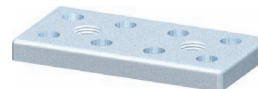
80 x 80



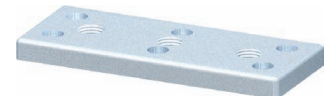
80 x 80 Eck 7N



80 x 120

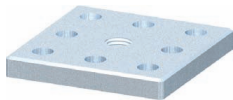


80 x 160

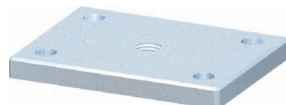


80 x 200

**Fußplatten 80, verzinkt**  
**Foot Plates 80, zinc-plated**



120 x 120



120 x 160



30 x 60 midi



60 x 60 midi



20 x 40 mini

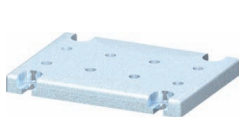


40 x 40 mini

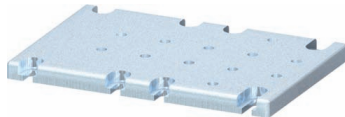
**Fußplatten 120, verzinkt**  
**Foot Plates 120, zinc-plated**

**Fußplatten midi, verzinkt**  
**Foot Plates midi, zinc-plated**

**Fußplatten mini, verzinkt**  
**Foot Plates mini, zinc-plated**



120 x 160 Ø9



160 x 240 Ø9

**Systemplatten, verzinkt**  
**System Plates, zinc-plated**



Doppelnrollen Ø 75 (gebremst)  
 Double Castors Ø 75 (braked)



Rollenfuß Ø 75  
 Castor Ø 75



Rollenfuß Ø 125  
 Castor Ø 125



Lenkrollen Ø 75 (gebremst)  
 Castors Ø 75 (braked)

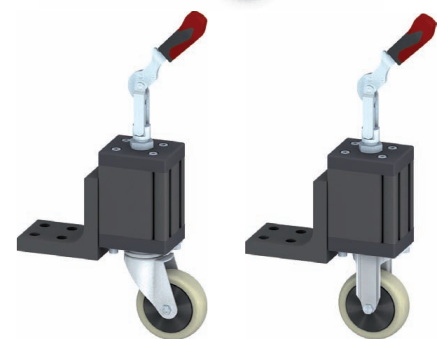


Lenkrollen Ø 125 (gebremst)  
 Castors Ø 125 (braked)



Rollenfüße Ø 50 (gebremst)  
 Castors Ø 50 (braked)

**Rollenfüße, Rollen**  
**Castors**



**Hubrolleneinheiten, mit Lenk- und Bockrolle**  
**Lifting Castor Units, with steering and trestle roller**



M5/L41 M8/L41 M8/L65

**Stellfüße Ø29**  
Adjustable Feet Ø29



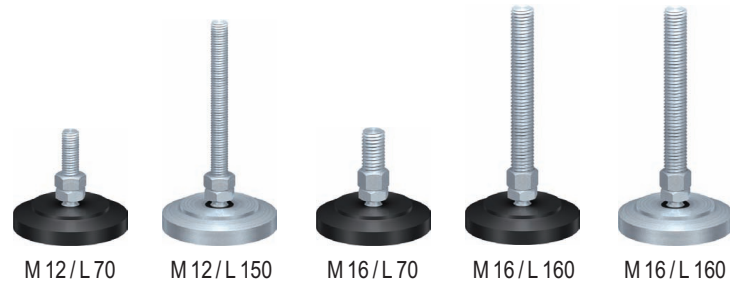
M8/L41 M8/L65 M10/L65

**Stellfüße Ø39**  
Adjustable Feet Ø39



M8/L44 M8/L68 M10/L68

**Stellfüße Ø54**  
Adjustable Feet Ø54

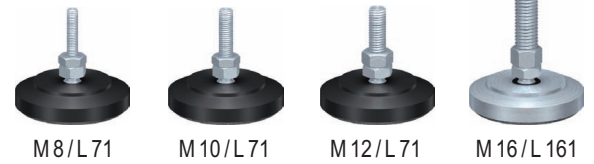


M12/L70 M12/L150 M16/L70 M16/L160 M16/L160

**Stellfüße Ø79**  
Adjustable Feet Ø79



Stellfußkappe  
Rubber Boot

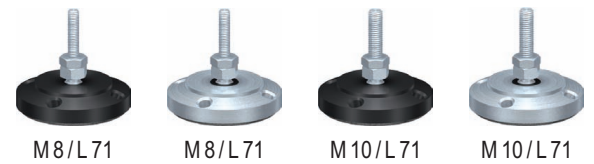


M8/L71 M10/L71 M12/L71 M16/L161

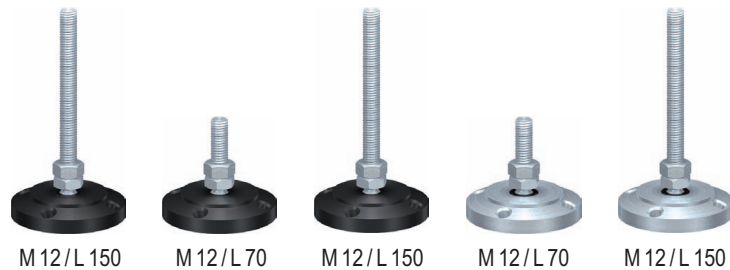
**Stellfüße Ø79, mit Dämpfung**  
Adjustable Feet Ø79, with anti-vibration pad



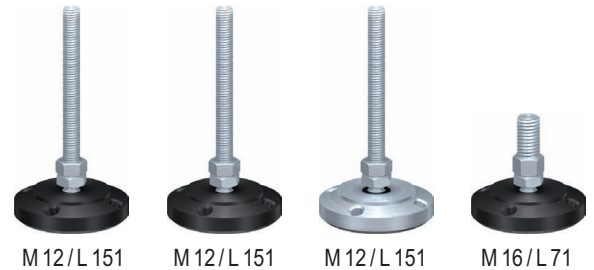
M8/L70 M8/L70 M10/L70 M10/L70 M12/L70



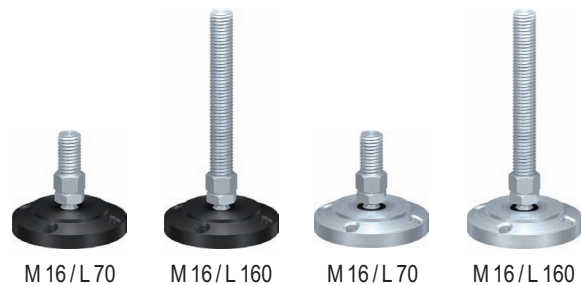
M8/L71 M8/L71 M10/L71 M10/L71



M12/L150 M12/L70 M12/L150 M12/L70 M12/L150



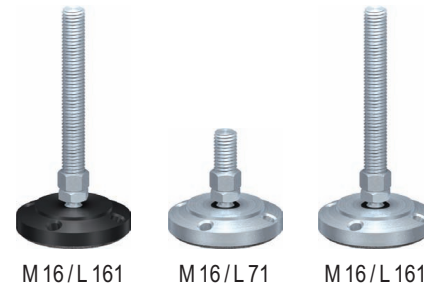
M12/L151 M12/L151 M12/L151 M16/L71



M16/L70 M16/L160 M16/L70 M16/L160



Befestigungssatz  
Fixing Set



M16/L161 M16/L71 M16/L161



Befestigungssatz  
Fixing Set

**Stellfüße Ø79, mit Befestigungsbohrung**  
Adjustable Feet Ø79, with fixing holes

**Stellfüße Ø79, mit Befestigungsbohrung und Dämpfung**  
Adjustable Feet Ø79, with fixing holes and anti-vibration pad



M 16/L 94



M 16/L 165

**Stellfüße Ø 136, mit Befestigungsbohrung**  
Adjustable Feet Ø 136, with fixing holes



M 16/L 95



M 20/L 95



M 16/L 166



M 20/L 166

**Stellfüße Ø 136, mit Befestigungsbohrung, Dämpfung**  
Adjustable Feet Ø 136, with fixing holes, anti-vibration pad



M 16/L 95



M 20/L 95

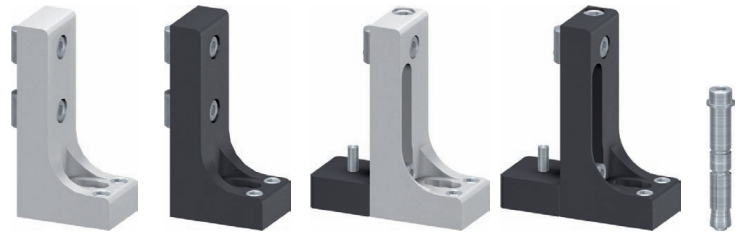


M 16/L 166



M 20/L 166

**Stellfüße Ø 136 Stahl, mit Befestigungsbohrung, Dämpfung**  
Adjustable Feet Ø 136 steel, with fixing holes, anti-vibration pad



Winkelstellfüße  
Angle Feet

Winkelstellfüße, höhenverstellbar  
Angle Feet, adjustable

**Winkelstellfüße 60 x 120**  
Angle Feet 60 x 120



**Klemmstellfüße 40x40, 60x80, 80x80**  
Clamping Feet 40x40, 60x80, 80x80

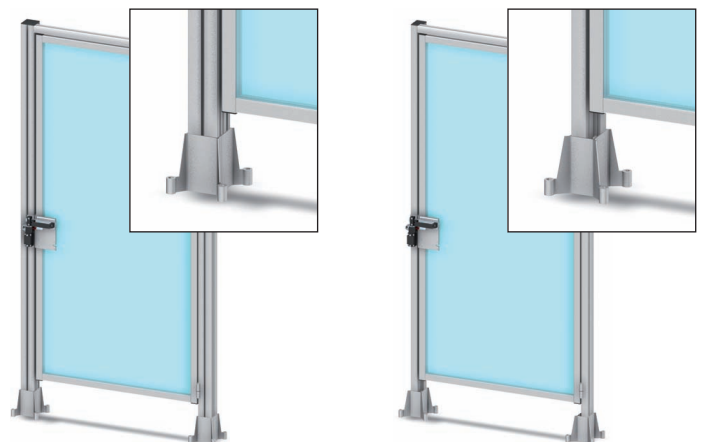


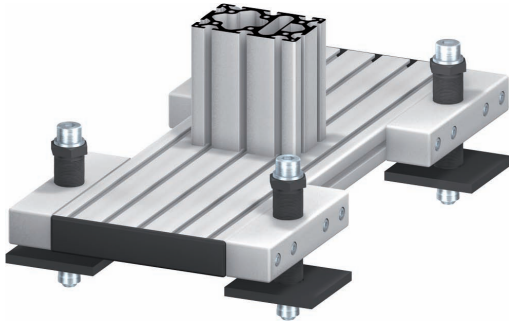
Stellfuß 80 x 80  
Mounting Foot 80 x 80

Stellfuß 60 x 80  
Mounting Foot 60 x 80

Gussstellfuß  
Metal Foot

**Stellfüße Schutz- und Trennwände**  
Mounting Feet Protection and Separator Walls

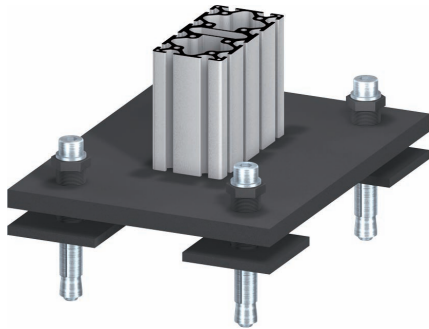




Bodenbefestigungsplatte Floor Fixing Plate  
Bodenplatte 28 x 160 x 160 Floor Plate 28 x 160 x 160  
Bodenplatte 28 x 160 x 280 Floor Plate 28 x 160 x 280



Stellschraube M 32 x 1,5 60 SW 36 Jacking Screw M 32 x 1.5 60 SW 36  
Stellschraube M 32 x 1,5 100 SW 36 Jacking Screw M 32 x 1.5 100 SW 36  
Fußklotz M 32 x 1,5 Foot Block M 32 x 1.5

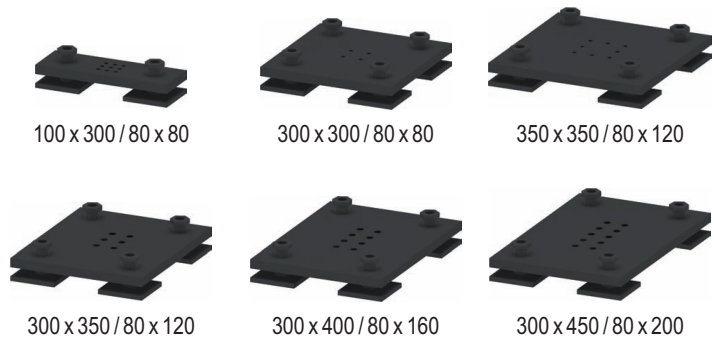


Druckplatte 100 x 100 x 10 Pressure Plate 100 x 100 x 10

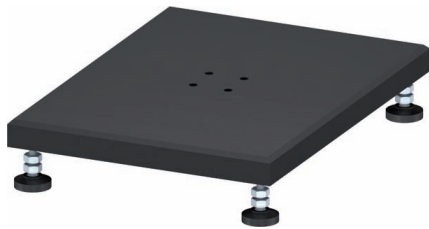


Befestigungssatz Portalplatte Fixing Set For Portal Plates

**Bodenbefestigungselemente**  
Floor Fixation Elements

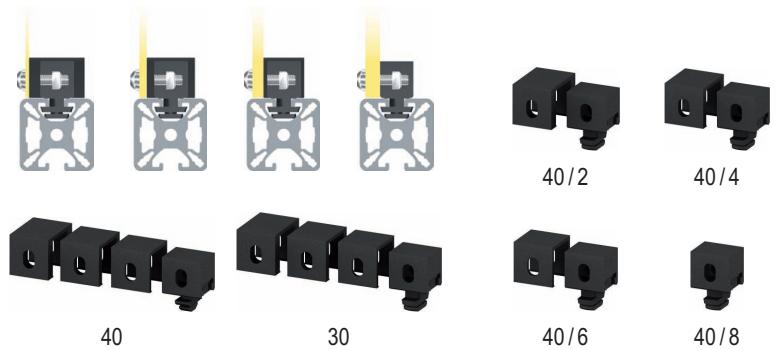


100 x 300 / 80 x 80  
300 x 300 / 80 x 80  
350 x 350 / 80 x 120  
300 x 350 / 80 x 120  
300 x 400 / 80 x 160  
300 x 450 / 80 x 200

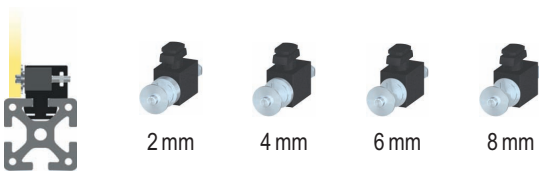


Fußplatte mit vier Stellfüßen Ø 39  
Foot Plate with four adjustable feet Ø 39

**Portalplatten**  
Portal Plates



40 / 2  
40 / 4  
40 / 6  
40 / 8



2 mm  
4 mm  
6 mm  
8 mm

**Magnetverschlüsse**  
Magnetic Catch Plates

**Befestigungsblöcke vario**  
Fixing Blocks vario

**Befestigungsblöcke**  
Fixing Blocks





Handgriff AI, 147 mm  
Handle AI, 147 mm

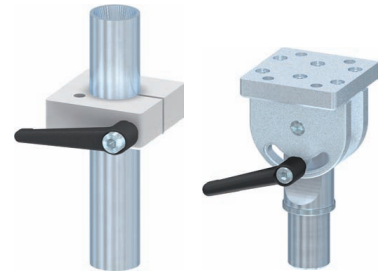
Handgriff AI 55°  
Handle AI 55°

Handgriff PA  
Handle PA

Handgriff AI, 700 mm  
Handle AI, 700 mm

Handgriff light  
Handle, light

Schutzzaungriff  
Protection Wall Handle



Verstellelemente  
Adjusting Elements

Handgriffe  
Handles



40, natur  
40, natural

40, schwarz  
40, black

40 GDZn, schwarz  
40 GDZn, black

40 Am 8  
40 Am 8

20/20 PA  
20/20 PA

30/20 PA  
30/20 PA

30/30 PA  
30/30 PA

40/30 PA  
40/30 PA

40/40 PA  
40/40 PA

40, Stahl  
40, steel

40 L 124, natur  
40 L 124, natural

40 L 160, natur  
40 L 160, natural

40 AI, natur  
40 AI, natural

20 PA, links  
20 PA, left

20 PA, rechts  
20 PA, right

20 PA Doppel  
20 PA Double

30 PA, links  
30 PA, left

30 PA, rechts  
30 PA, right

30 PA Doppel  
30 PA Double

32 PA, links  
32 PA, left

32 PA, rechts  
32 PA, right

32 PA Doppel  
32 PA Double

48 PA, links  
48 PA, left

48 PA, rechts  
48 PA, right

Scharniere 40  
Hinges 40

Scharnier 30, natur  
Hinge 30, natural

Scharnier 30 VA  
Hinge 30 VA

Scharniere PA  
Hinges PA

40 PA  
40 PA

40, natur  
40, natural

40, schwarz  
40, black

40 SVPS, schwarz  
40 SVPS, black

40 SVPS, natur  
40 SVPS, natural

Einhängungen 40  
Hangers 40

Einhängungen 40 SVPS  
Hangers 40 SVPS

30, schwarz  
30, black

30, natur  
30, natural

20, schwarz  
20, black

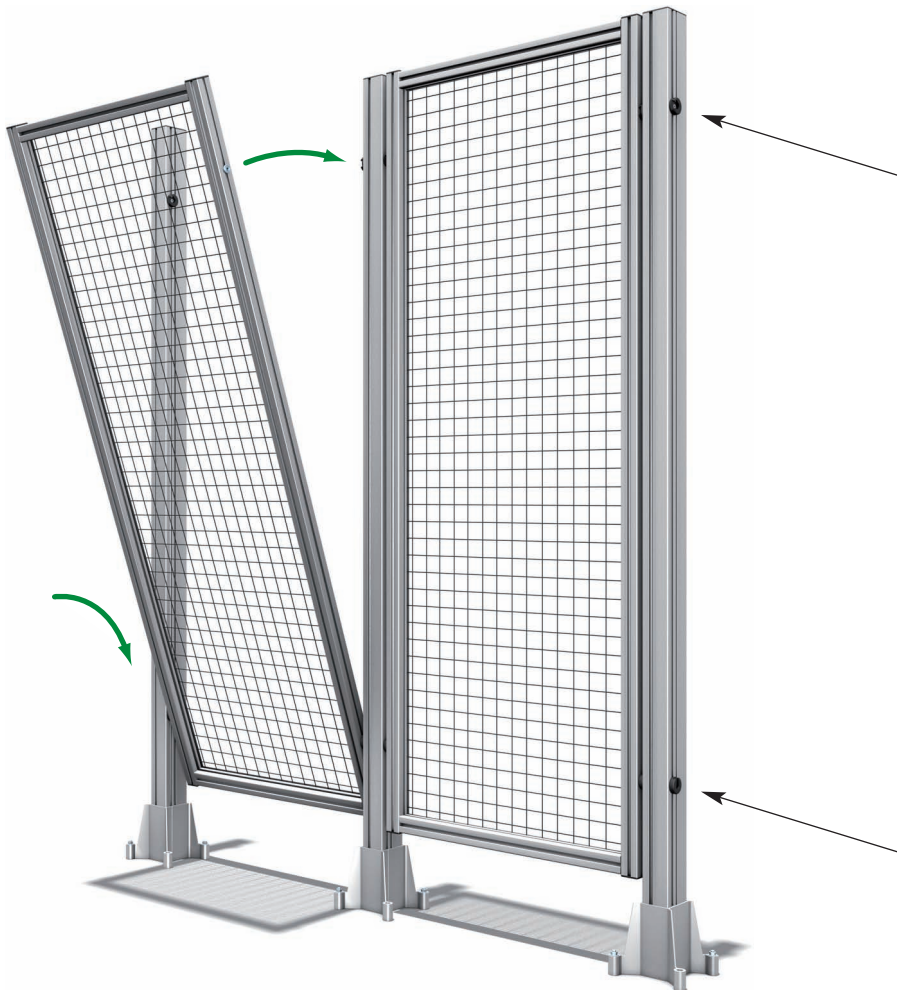
20, natur  
20, natural

Einhängungen 30  
Hangers 30

Einhängungen 20  
Hangers 20



**Einhängfelder gemäß der Maschinenrichtlinie 2006/42/EG**  
 Mounting Elements According To Machinery Directive 2006/42/EG



40 V Verschluss L, schwarz  
 40 V Fastener L, black



40 V Verschluss R, schwarz  
 40 V Fastener R, black



40 U, schwarz  
 40 U, black

**Einhängungen 40 V**  
 Hangers 40 V



Einhängfeld wird in die Eihängung eingeschwenkt.  
 Mounting element is pivoted into the hanger.



Fixierschraube schiebt sich unter den Riegel.  
 Fixing screw slides under the latch.

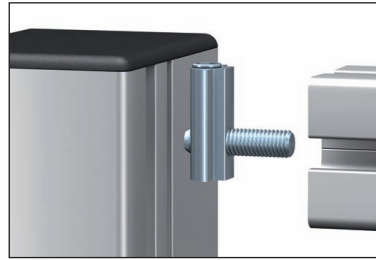
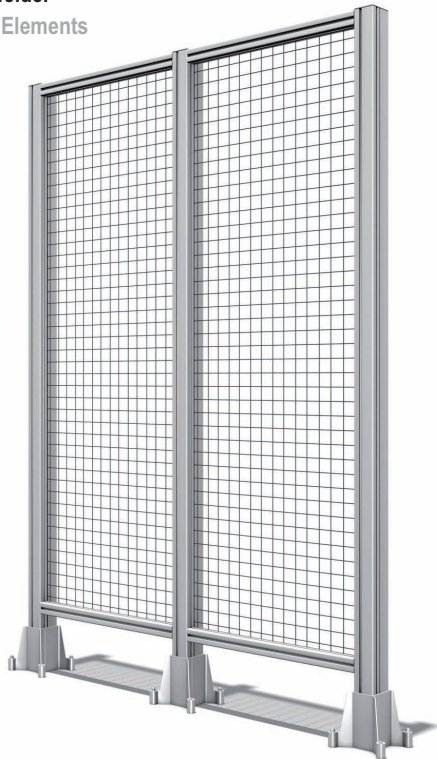


Fixierschraube in Endlage. Riegel sichert und klemmt die Fixierschraube.  
 Fixing screw in end position. The latch insures and clamps the fixing screw.



Zum Lösen des Elements den Riegel durch die Bohrungsöffnung aufschieben.  
 To release the element delay the latch through the bore opening.

**Direktfelder**  
Static Elements



Durch Lösen der Gewindestifte im jeweiligen Nutstein können die Querstreben sowie das Flächenelement in der Nut verschoben werden.  
By loosening the screws in the respective t-nut, the cross braces and the sheet material may be moved in the t-slot.

Die Gewindestifte sind in den oberen Zentralspannern GC mit dem Innensechskant nach oben ausgerichtet, bei den unteren entsprechend nach unten.

The set screws are aligned in the upper central fasteners GC with the Allen upward at the lower down accordingly.



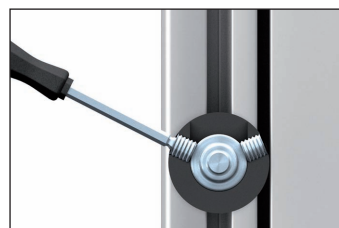
Der Abstand der Säulenprofile ergibt sich durch die Querprofile der Flächenelemente

The distance between the column profiles is determined by the cross braces of the sheet materials.

**Einhängfelder**  
Suspension Elements



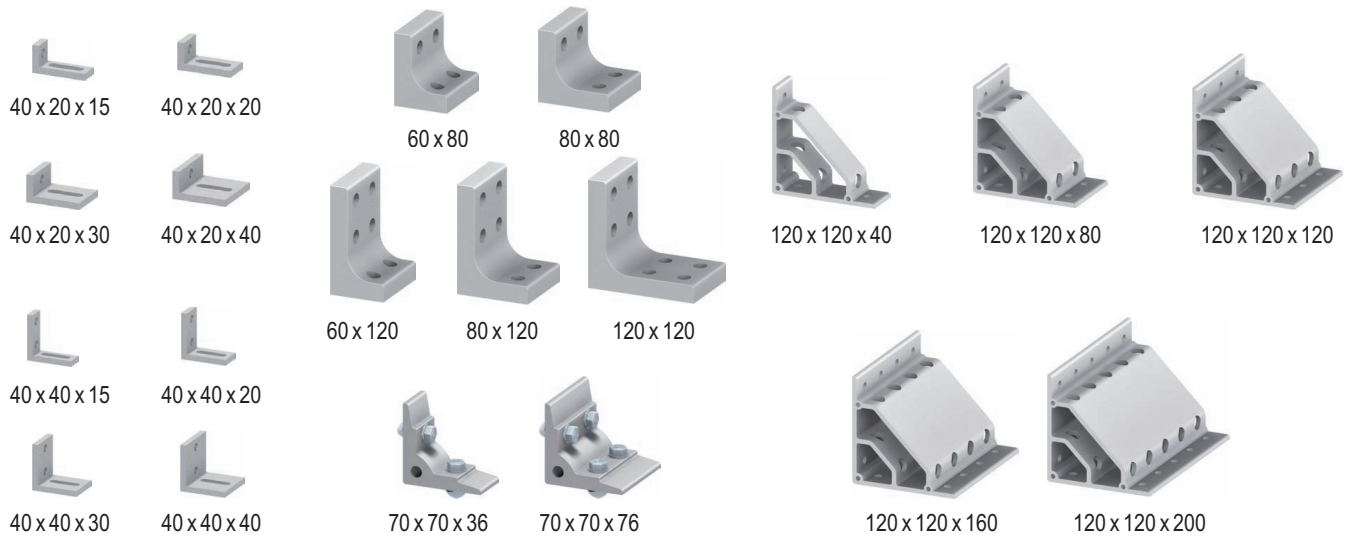
Einhängfeld wird in die Einhängung eingeschwenkt.  
Suspension element is pivoted into the hanger.



Fixierschraube schiebt sich in die Einhängung und wird durch Anziehen beider Gewindestifte gesichert.

Fixing screw slides under the hanger and is insured by tightening both Allen set screws.

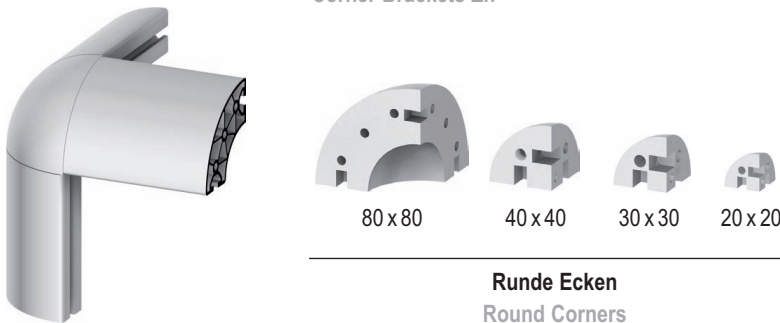




**Befestigungswinkel**  
**Fixing Angles**



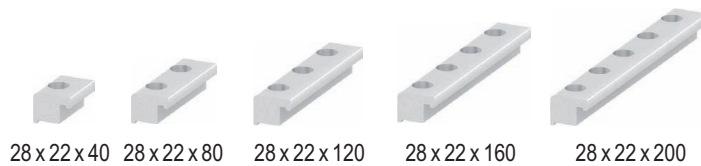
**Winkel Zn**  
**Corner Brackets Zn**



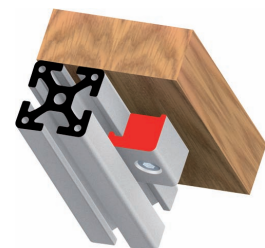
**Winkelelemente**  
**Angle Elements**



**Runde Ecken**  
**Round Corners**



**Knotenbleche**  
**Gusset Plates**



**Spannwinkel**  
**Clamp Angles**

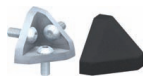




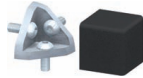
Winkel 40 x 40 45°  
Fastener 40 x 40 45°



40 x 40 rund  
40 x 40 round



40 x 40 45°  
40 x 40 45°



40 x 40 Eck  
40 x 40 edge



40 x 40 (mit Klemmhebel)  
40 x 40 (with clamp lever)



40 x 40, schwer  
40 x 40, massive



40 x 80 (mit Klemmhebel)  
40 x 80 (with clamp lever)



**Befestigungssätze 40 x 40**  
Corner Fastener Sets 40 x 40

**Gelenke**  
Heavy Duty Joints



Ø26



Ø24



Ø29



40



80



Ø45



RM Ø45



RS Ø45

**Rollen, POM**  
Rollers, POM



Systemgleiter  
System Glider



Gleitschiene  
Slide Rail

**Rollenhalterungen**  
Roller Housings



Gleitstück 40  
System Glider 40



40, versetzt  
40, offset

**Tragrollen**  
Load Bearing Rollers



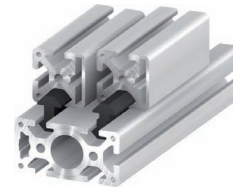
40, feststellbar  
40, lockable



40, versetzt, feststellbar  
40, offset, lockable



40, natur  
40, natural



40, schwarz  
40, black



20, natur  
20, natural

20, schwarz  
20, black

**Gleitstücke 40**  
System Gliders 40



40 4 mm



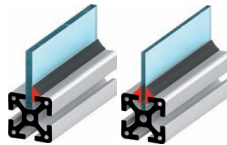
40 6 mm



30 4 mm



30 6 mm



**Klemm- und Dichtgummi**  
Sealing Rubber



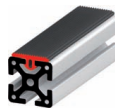
16 x 2.2



24 x 3



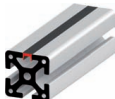
32 x 4



**Abdeckgummi**  
Covering Rubber



**Abdeckprofile**  
Cover Profiles



Türdichtung 20  
Door Sealing 20

**Abdeck- und Einfassprofile**  
Edging And Cover Profiles



40



30

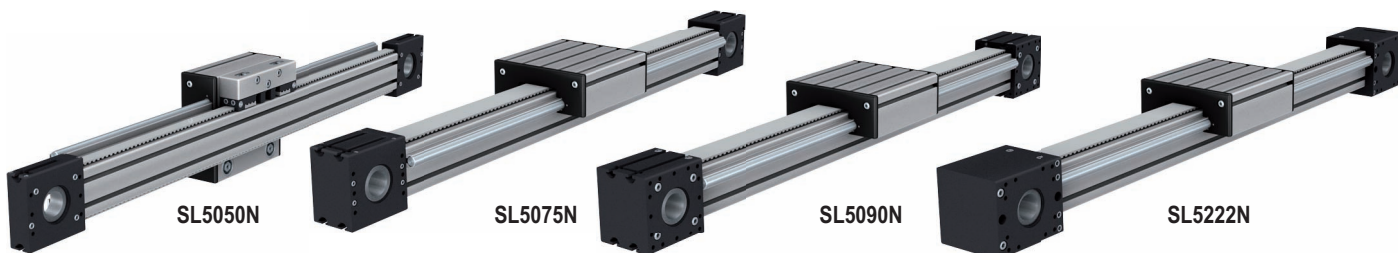


20



**Türschnapper**  
Spring Door Catches

**40** Linearachsensysteme 16  
Linear Actuator Systems 16

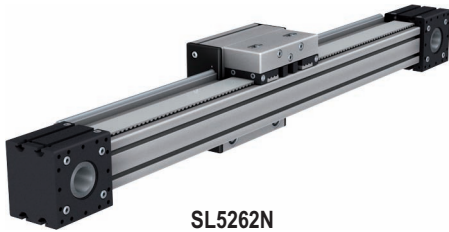




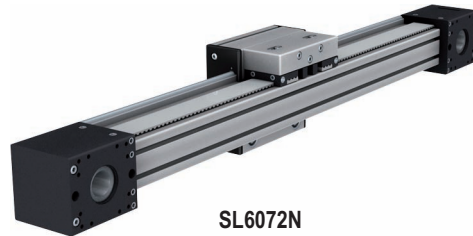
SL5252N



SL6020N



SL5262N



SL6072N



SL7005N, SL7007N

Kugelgewindetrieb 20 x 5, Kugelgewindetrieb 20 x 20  
Ball Bearing Screw 20 x 5, Ball Bearing Screw 20 x 5



SL7008N

Trapezgewindetrieb  
Trapezoidal Transmission



**40** Linearachsensysteme 16 mit Gegenumlenkung  
Linear Actuator Systems 16 with Omega Drive



SL5018N



SL5229N



SL5290N



SL5227N



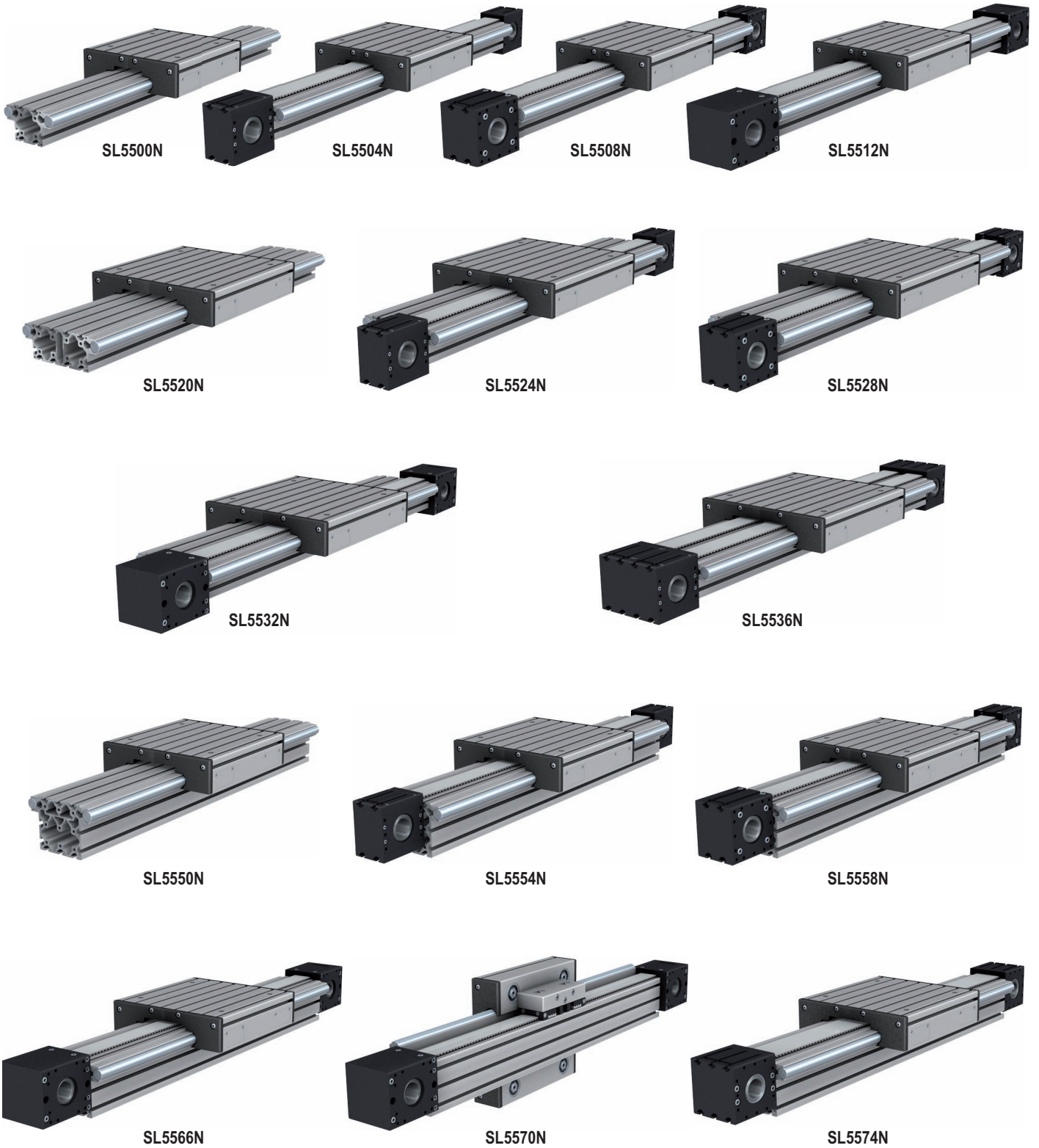
SL5400N

Teleskopachse  
Telescope Axis

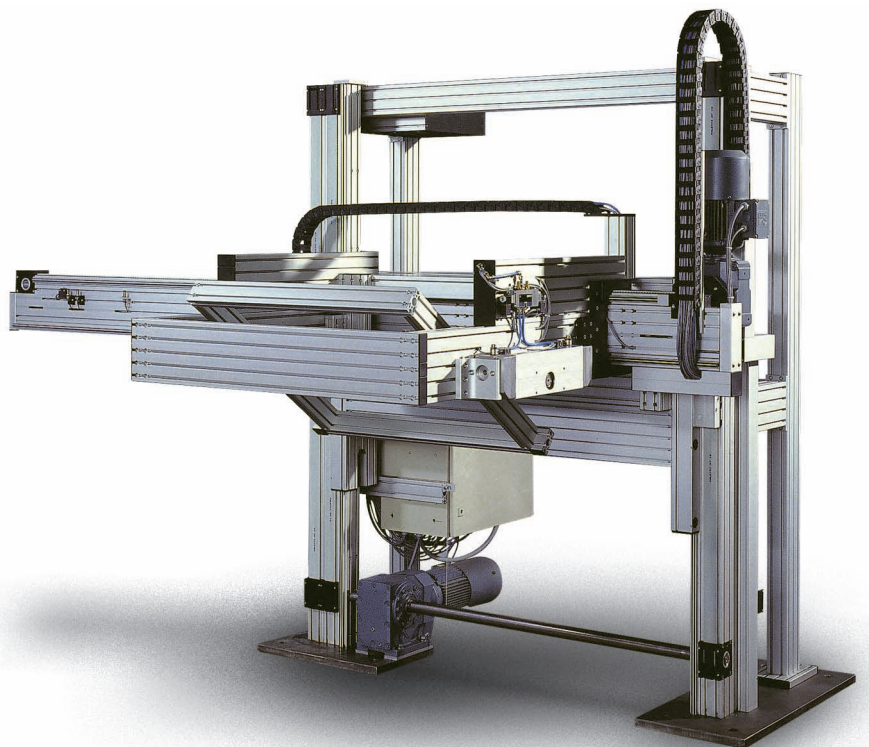
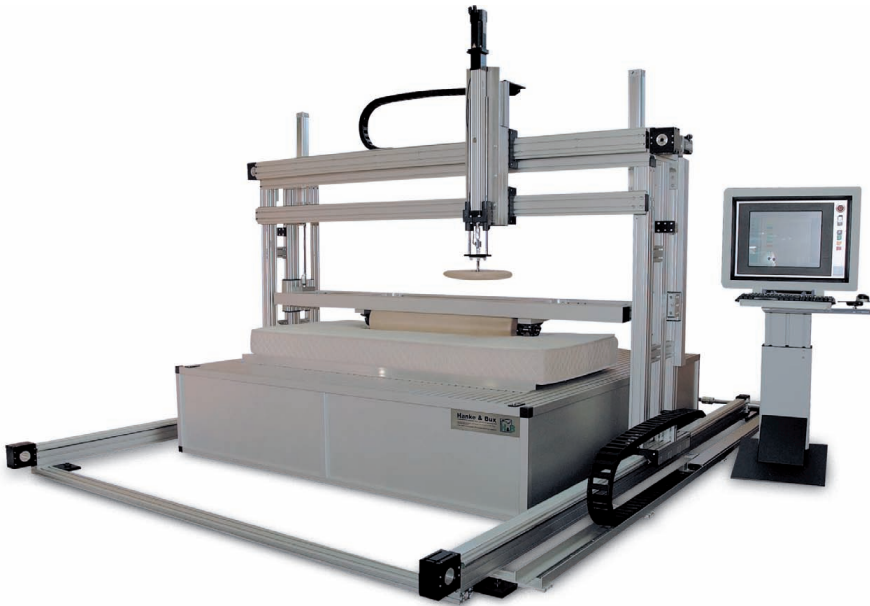


40

Linearachsensysteme 25  
Linear Actuator Systems 25







**40** Innenliegende Führungen  
Internal Drive Systems



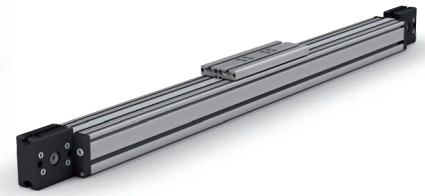
**SL4050N**

Innenliegende Führung 120 x 120  
Internal Drive System 120 x 120



**SL4063N**

Kugelgewinde- / Trapezgewindetrieb  
Ball Bearing Screw / Trapezoidal Transmission



**SL4070N**

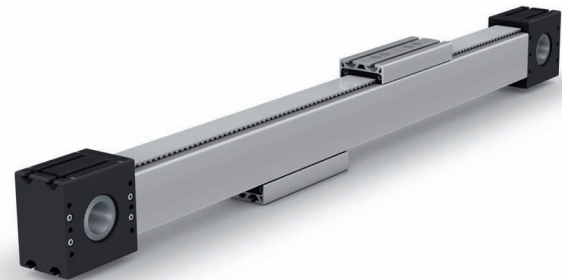
Innenliegende Führung 80 x 85  
Internal Drive System 80 x 85

**40** Innenliegende Führungen 80 / 90  
Internal Drive Systems 80 / 90



**SL5300N**

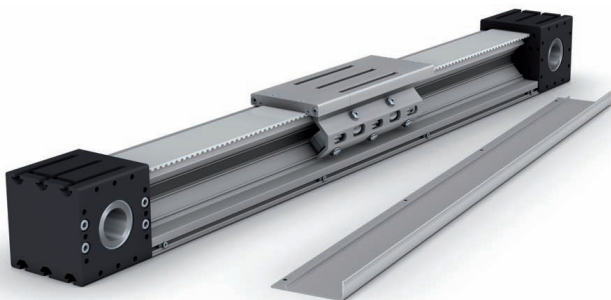
Einzelführung  
Single Guidance



**SL5350N**

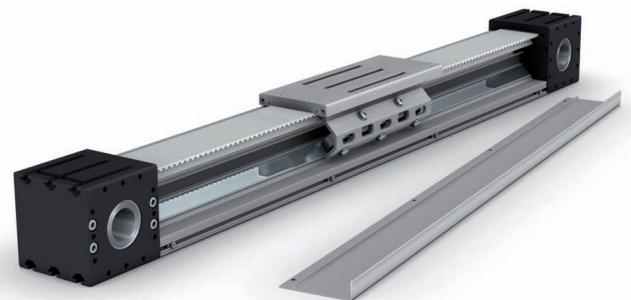
Doppelführung  
Double Guidance

**40** Innenliegende Führungen 120 / 120  
Internal Drive Systems 120 / 120



**SL5360N**

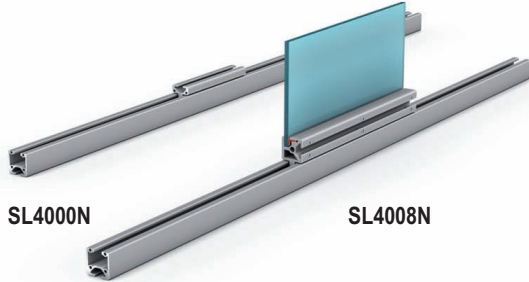
Kunststoffrollenführung  
Plastic Roller Guidance



**SL5370N**

Stahlrollenführung  
Steel Roller Guidance

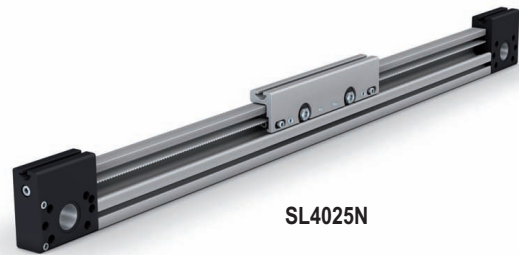
**30** C-Führungen C 30 / 43  
C-Tracks C 30 / 43



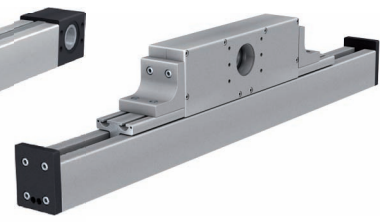
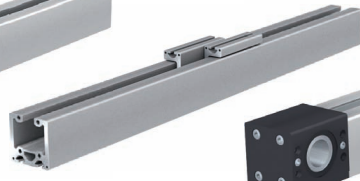
**40** C-Führungen C 40 / 57  
C-Tracks C 40 / 57



**40** C-Führungen C 40 / 100  
C-Tracks C 40 / 100



**40** C-Führungen C 80 / 100  
C-Tracks C 80 / 100



SL4029N

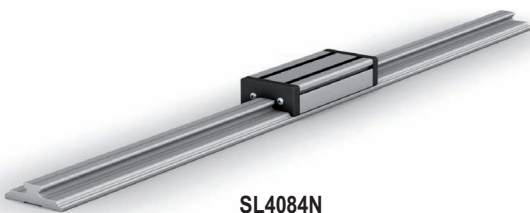
SL4040N

SL4035N

SL4038N

C-Gegenumlenkung  
Omega Drive C-Type

**40** Kugelumlauf- / Gleitführung  
Recirculating Ball Slide / Glider Slide



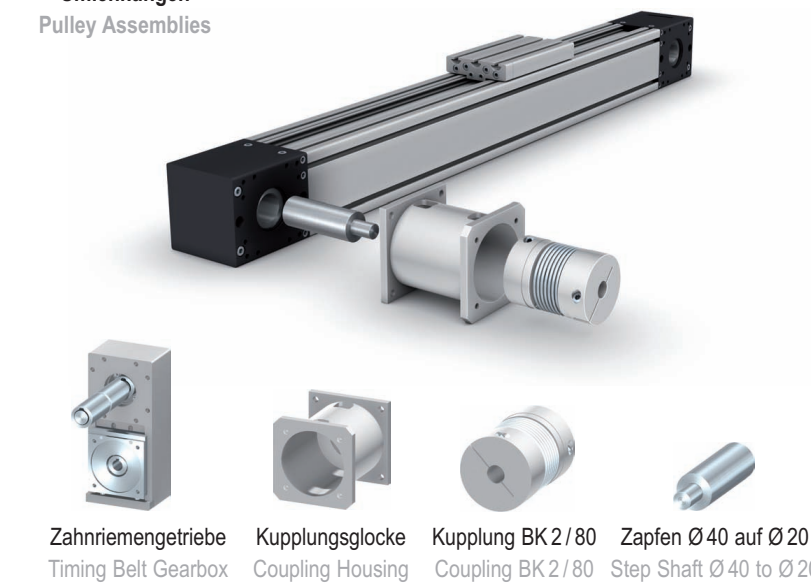
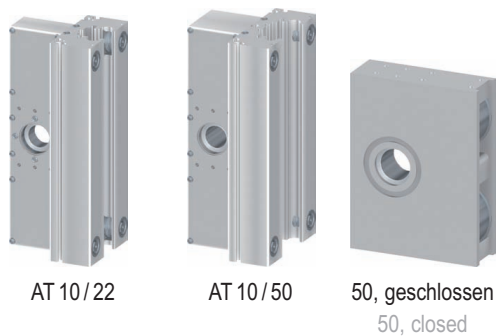
SL4084N



SL4094N



**Umlenkungen**  
 Pulley Assemblies

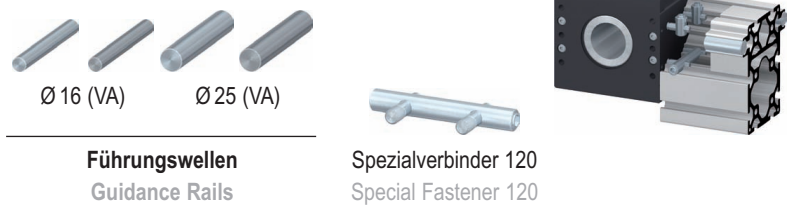


**Gegenumlenkungen**  
 Omega Drives



**Zahnriemen**  
 Timing Belts

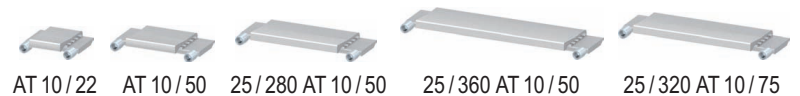
**Motorkupplung**  
 Motor Coupling



**Führungswellen**  
 Guidance Rails



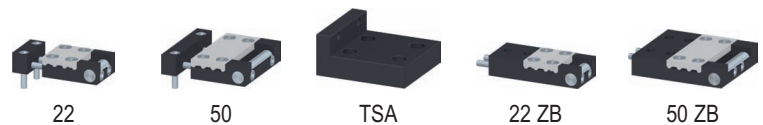
**Laufrollen, Lagerachsen 16**  
 Rollers, Roller Axles 16



**Zahnriemenspanner**  
 Timing Belt Tensioners



**Laufrollen, Lagerachsen 25**  
 Rollers, Roller Axles 25



**Zahnriemenspanner, extern**  
 Timing Belt Tensioners, external





16/160/60/2



16/160/140/4



16/160/200/4



16/160/60/2/S



16/160/140/4/S



16/160/200/4/S

**Laufwagen 16/160**  
Carriages 16/160

**Laufwagen 16/160 mit Servicetaschen**  
Carriages 16/160 with service pockets



16/200/60/2



16/200/140/4



16/200/200/4



16/200/280/4



16/200/60/2/S



16/200/140/4/S



16/200/200/4/S



16/200/280/4/S

**Laufwagen 16/200**  
Carriages 16/200

**Laufwagen 16/200 mit Servicetaschen**  
Carriages 16/200 with service pockets



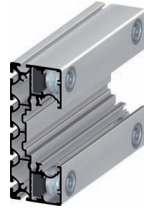
16/200/60/4 sl



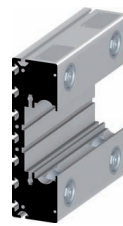
16/200/140/4 sl



16/200/200/4 sl



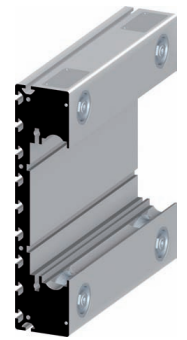
16/200/280/4 sl



25/280/280/4/S



25/320/320/4/S



25/360/360/4/S

**Laufwagen 16/200 superlight**  
Carriages 16/200 superlight

**Laufwagen 25**  
Carriages 25



160



200



200 E



16 S



280



320



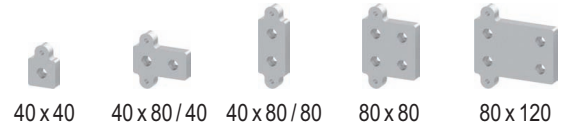
360

**Abstreif- und Schmier-systeme**  
Wiper And Lubrication Systems





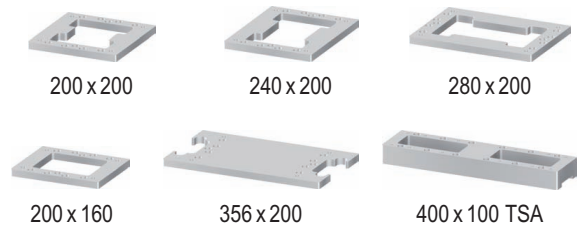
**Puffer**  
End Stops



**Fixierplatten für Führungswellen 16**  
Guidance Rail Stop Plates 16



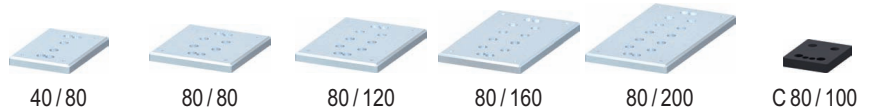
**Endanschlagset 8**  
End Of Stroke Set 8



**Laufwagenverbindungsplatten**  
Carriage Joining Plates



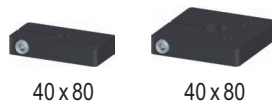
**Kontaktleiste (100, 120)**  
Limit Switch Cam (100, 120)



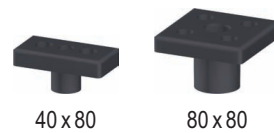
**stirnseitige Zugplatten**  
Fastener Attachment Plates



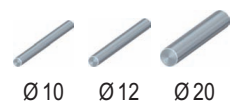
**Adapterplatten für Umlenkung 40/40**  
Adapter Plates for Pulley Assembly 40/40



**Klemmelemente**  
Clamp Elements



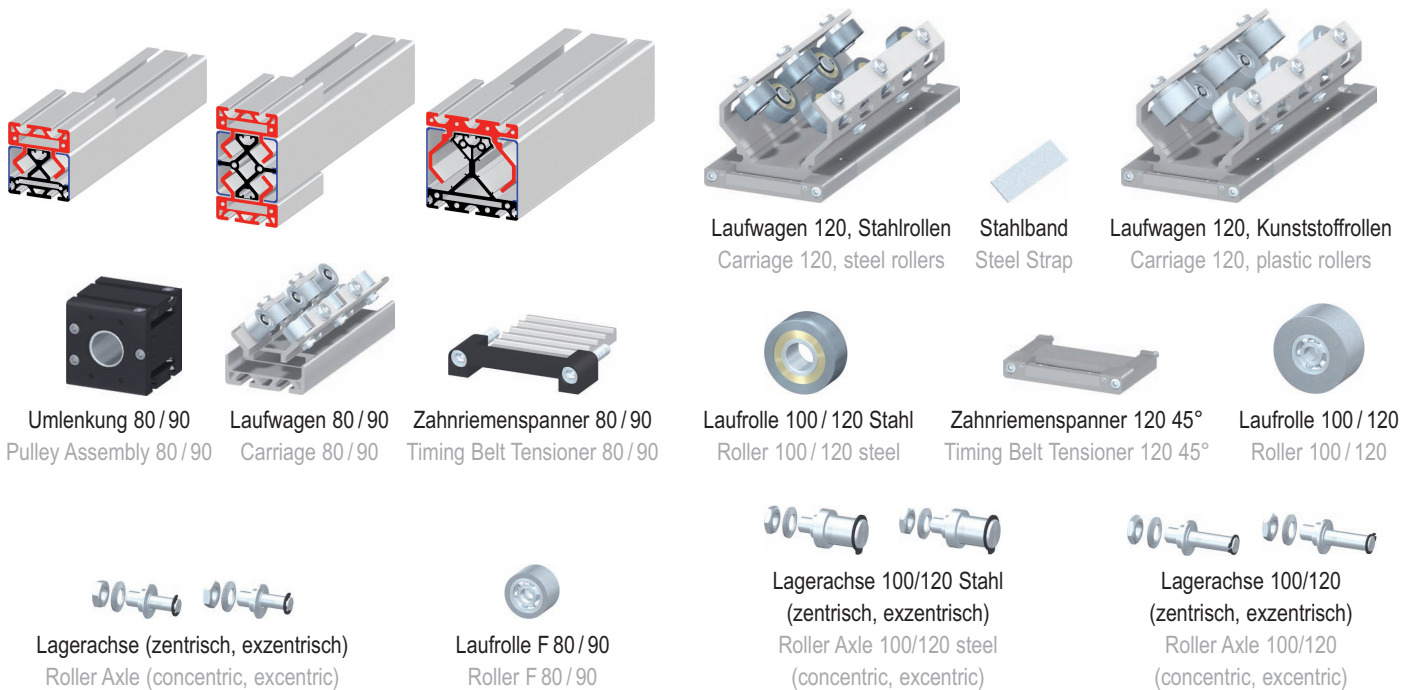
**Flanschplatten**  
Linear Flange Plates



**Führungswellen**  
Guidance Rails

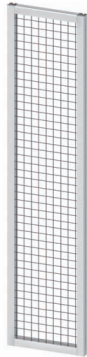


**Einzelkomponenten C-Führungen**  
C-Track Components

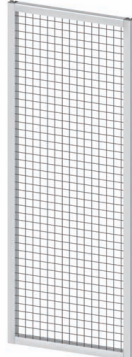


**Einzelkomponenten Linearachsen 80 / 90**  
Linear Actuator 80 / 90 Components

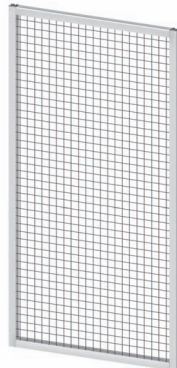
**Einzelkomponenten Linearachsen 120 / 120**  
Linear Actuator 120 / 120 Components



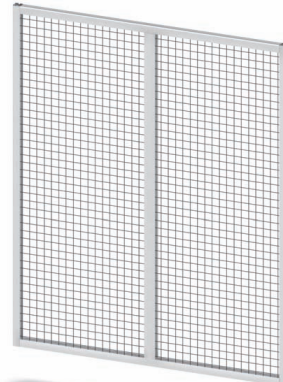
Flächenelement 500  
Protection Panel 500



Flächenelement 750  
Protection Panel 750



Flächenelement 1000  
Protection Panel 1000



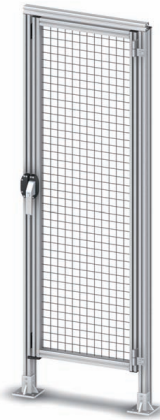
Flächenelement 1500  
Protection Panel 1500



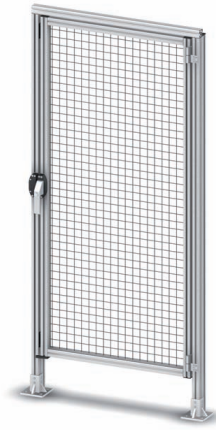
Ständer 40 x 40 sl  
Support Legs 40 x 40 sl



Ständer 40 x 80 sl  
Support Legs 40 x 80 sl



Türbausatz 750  
Door Kit 750



Türbausatz 1000  
Door Kit 1000



Doppeltürbausatz  
Double Door Kit

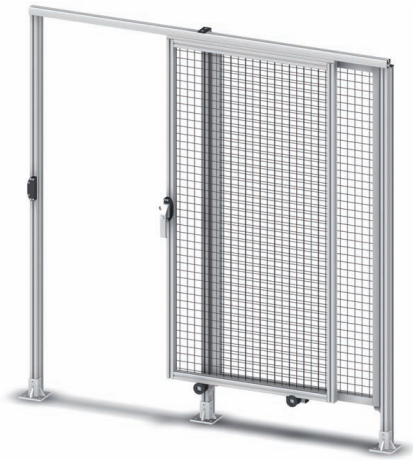
- vorgefertigte Rahmen in Standardrastermaßen: 500, 750, 1000, 1500
- vorgefertigte Ständer
- kombinierbar mit dem Standardprogramm
- Einschubbreite: 7.8 mm

- Türen und Doppeltüren mit Stangenschloss
- Schiebetüren mit und ohne Überbau
- Verbindung des Ständers mit dem Rahmen erfolgt mit der einstellbaren Halterung sowie einem Winkel mit Dreh- und Längseinstellung

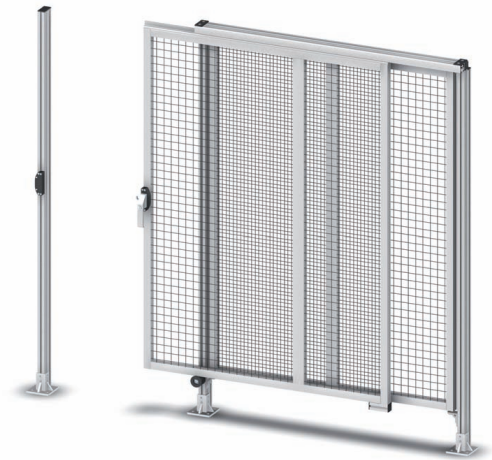
- preassembled protection panels in standard grids: 500, 750, 1000, 1500
- preassembled support legs
- compatible to the standard program
- panel thickness: 7.8 mm

- doors and double doors with latch system
- slide doors with and without super structure
- attachment of the frame elements to the support legs occurs via an adjustable holder and an angle with turn and along attitude





Schiebetürbausatz, mit Überbau  
Sliding Door Kit, with superstructure



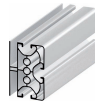
Schiebetürbausatz, ohne Überbau  
Sliding Door Kit, without superstructure



40



40 90°



40 180°

**Wellengitterprofile 40**  
Mesh Guarding Profiles 40



40 x 40, links  
40 x 40, left

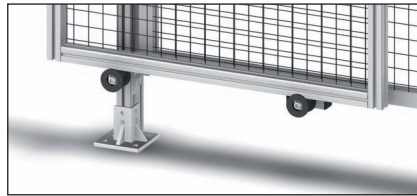
40 x 40, rechts  
40 x 40, right

40 x 80, links  
40 x 80, left

40 x 80, rechts  
40 x 80, right



Stabilisierungsrollen  
Stabilizing Rollers



Schutzzaunverschluss  
Protection Wall Lock



Gussstellfuß  
Metal Foot



Scharnier 40 Al, natur  
Hinge 40 Al, natural



Winkel 40 x 60  
Angle 40 x 60



Winkel 60 x 70  
Angle 60 x 70



Stift G  
Bolt G-Type



Halterung, einstellbar  
Holder, adjustable

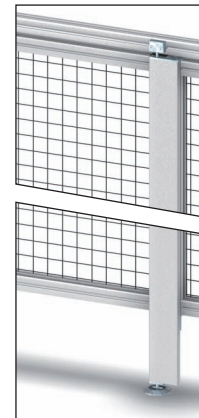
**Türverriegelungen**  
Door Latches



für Doppeltür  
for double door



für Einzeltür  
for single door

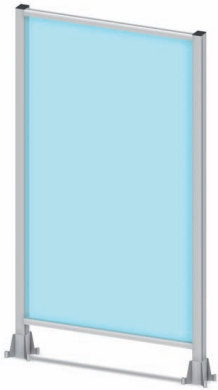


Bodenverriegelung  
Catch Plate

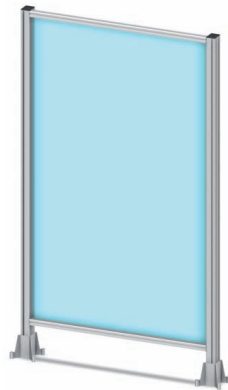


Tortreibriegelsatz  
Set Of Shoot Bolts  
for doors

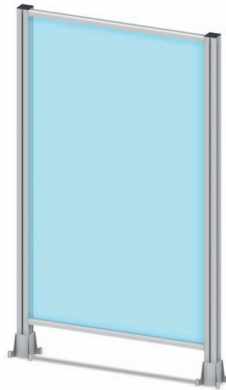
**Schutzzaunstangenschlösser**  
Protection Wall Latches



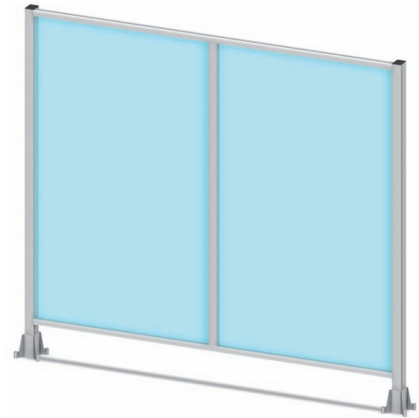
Rahmenelement 60 x 80  
 Frame Element 60 x 80



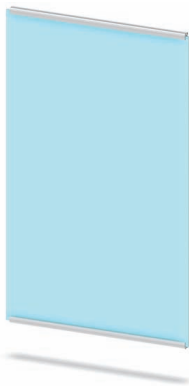
Rahmenelement 60 x 80 5N  
 Frame Element 60 x 80 5N



Rahmenelement 80 x 80  
 Frame Element 80 x 80



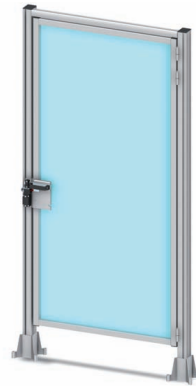
Doppelrahmenelement 60 x 80  
 Double Frame Element 60 x 80



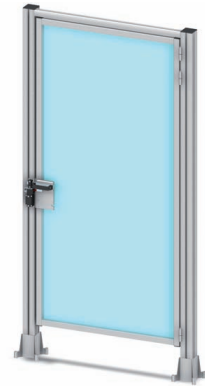
Zwischenelement 60 x 80 3N  
 Internal Element 60 x 80 3N



Türenelement 60 x 80  
 Door Element 60 x 80



Türenelement 60 x 80 5N  
 Door Element 60 x 80 5N



Türenelement 80 x 80  
 Door Element 80 x 80



40/4



40/4 8.6



40/4 semi



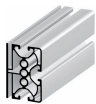
40/4 8.6 semi



Scharnier 40 Al, natur  
 Hinge 40 Al, natural



Verriegelungen  
 Locking Mechanisms



40/4 180°



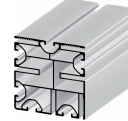
60 x 80



60 x 80



60 x 80 5N



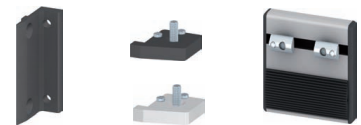
80 x 80



Stabilisierungsrollen  
 Stabilizing Rollers

- für 4 mm Scheiben geeignet
- vorgefertigte Rahmen in Standardmaßen mit unterschiedlicher Nutenanzahl (3/5/6)
- vorgefertigte Ständer
- kombinierbar mit dem Standardprogramm
- verriegelbare Einzel- und Doppeltüren
- saubere Oberflächen
- variable Einsatzmöglichkeiten

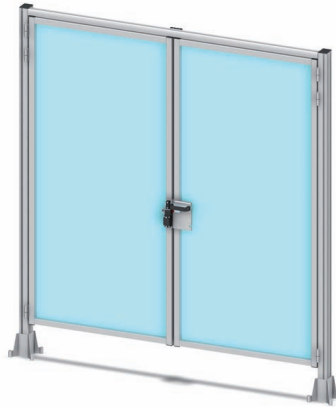
- for 4 mm panels
- preassembled frames in standard sizes with differing number of t-slots (3/5/6)
- preassembled support legs
- compatible to the standard program
- lockable single doors and double doors
- smooth, clean surfaces
- various applications



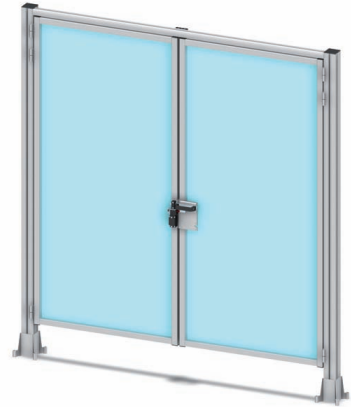
Türanschläge  
 Door Stops



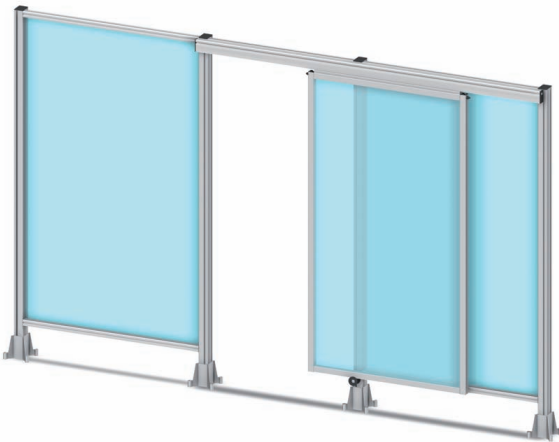
Doppeltürelement 60 x 80  
Double Door Element 60 x 80



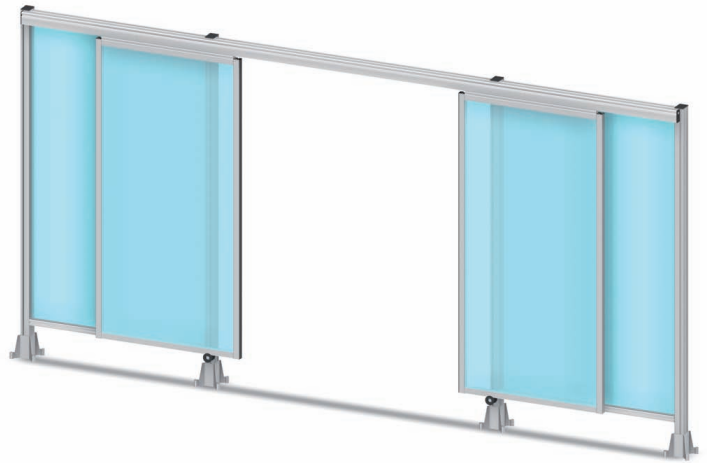
Doppeltürelement 60 x 80 5N  
Double Door Element 60 x 80 5N



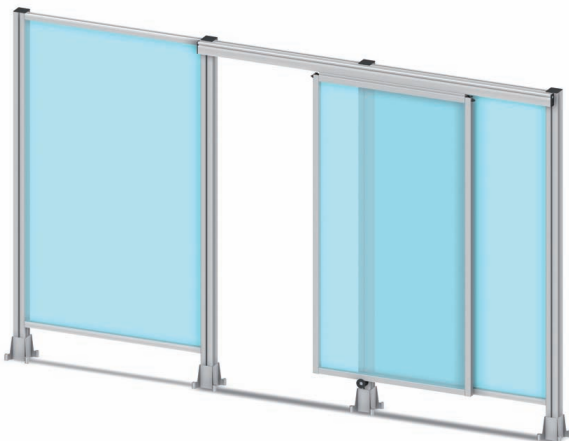
Doppeltürelement 80 x 80  
Double Door Element 80 x 80



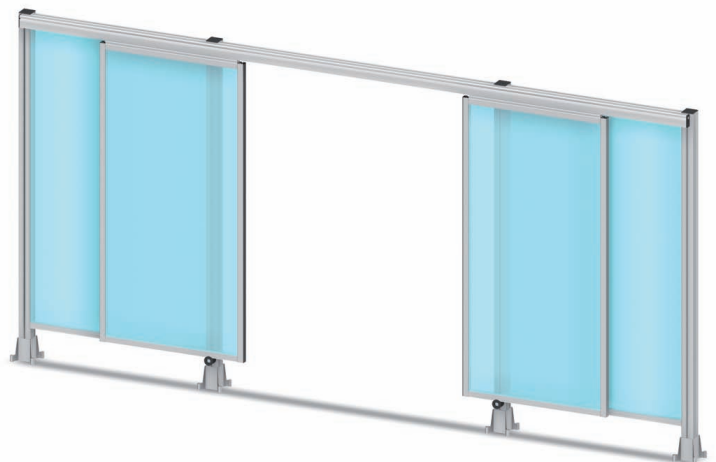
Schiebetürelement 60 x 80  
Sliding Door Element 60 x 80



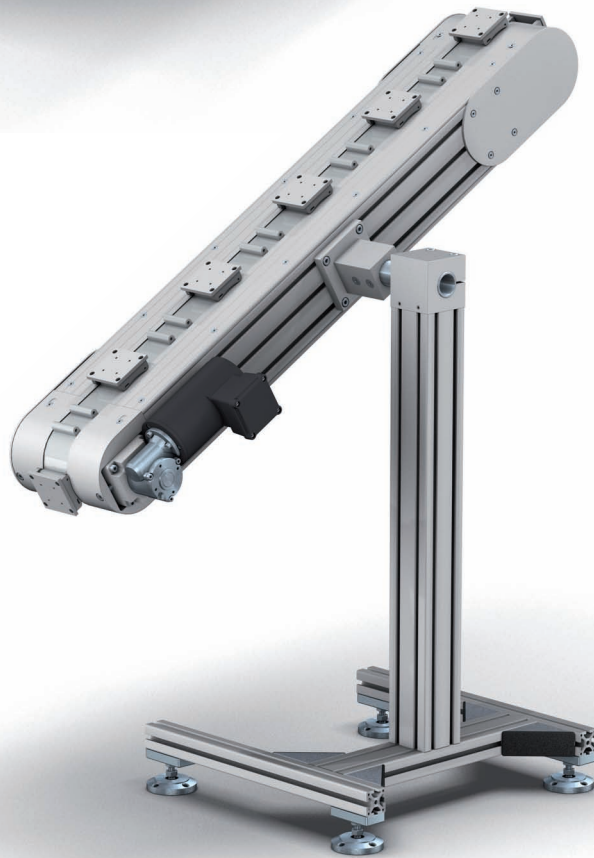
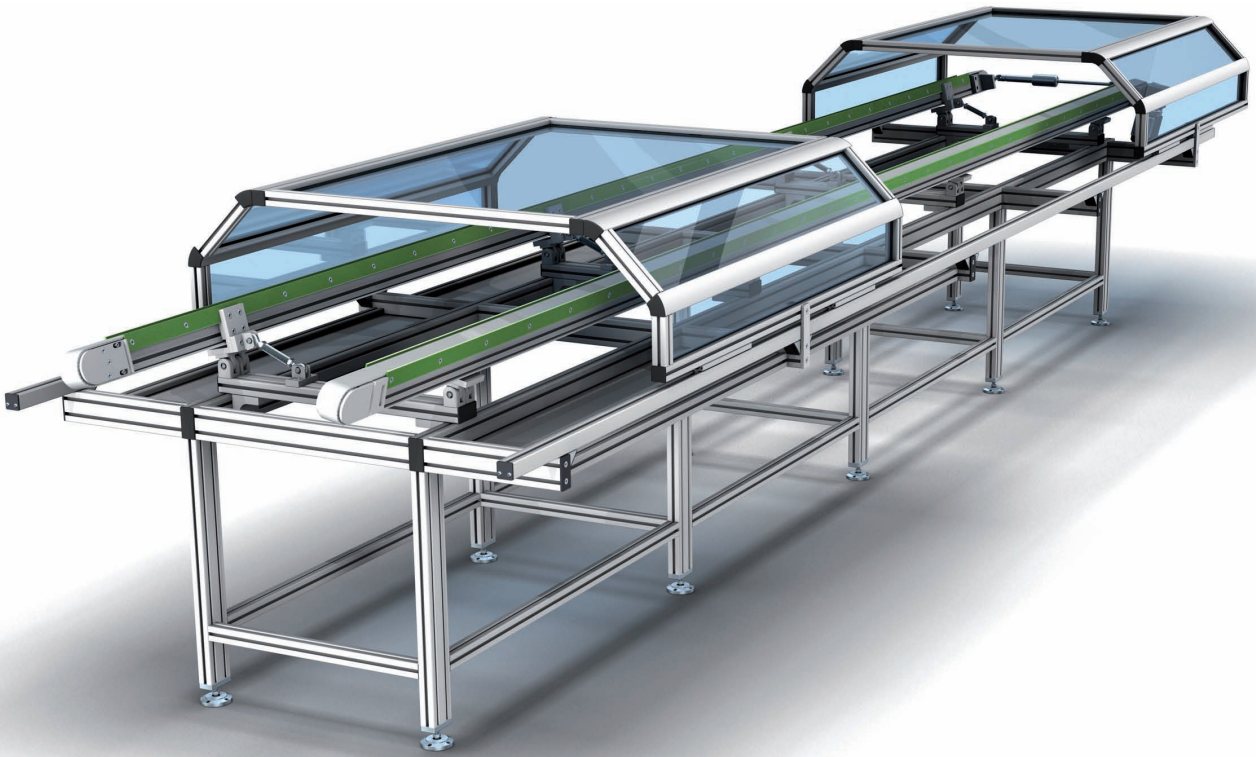
Doppelschiebetürelement 60 x 80  
Double Sliding Door Element 60 x 80



Schiebetürelement 80 x 80  
Sliding Door Element 80 x 80



Doppelschiebetürelement 80 x 80  
Double Sliding Door Element 80 x 80





**40** Fördertechnik  
 Conveyor Systems



**Förderband**  
 Belt Conveyor



Antriebseinheit TD (90 W)  
 Motor with Gearbox TD (90 W)



Antriebseinheit TD (180 W)  
 Motor with Gearbox TD (180 W)



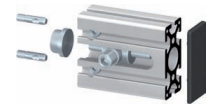
Antriebsrolle  
 Conveyor Roller



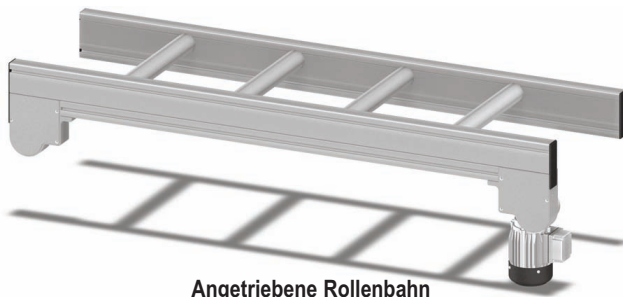
Umlenkrolle  
 Return Roller



Untertrummrolle  
 Idle Roller



Umlenkeinheit  
 Conveyor Belt Tensioner



**Angetriebene Rollenbahn**  
 Driven Roller Conveyor



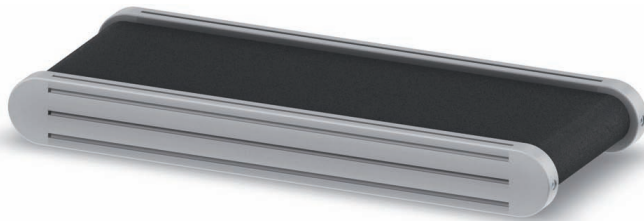
Rollenbahnprofil  
 Conveyor Profile



Rollenhalter  
 Roller Fastening Sets



Rollenblendensätze  
 Roller Protective Covers



**Förderband mit Trommelmotor**  
 Belt Conveyor with drum motor



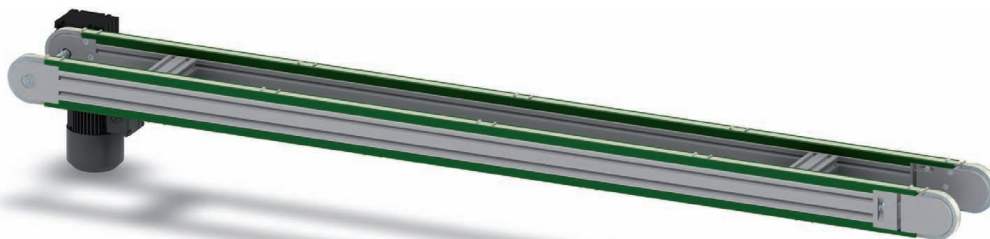
Antriebsaufnahme (links, rechts)  
 Drive Unit Attachment (left, right)



Umlenkeinheit  
 Return Unit



Umlenkrolle Ø 85  
 Return Roller Ø 85



**Zahnriemenförderer**  
 Timing Belt Conveyor

**40** **Arbeits- und Labortische**  
**Workstations And Laboratory Benches**



**Labortisch**

- hergestellt aus Standardprofilen
- Abknickung des hinteren Bereiches über Profil R 40 / 80 45°
- Baldachin mit integriertem Halogenstrahler
- Aufbau aus 40 x 40 Eck Profil
- über Gehrungsverbinder verbunden
- Pressluft und Stromversorgung über Kabelkanal 80 x 80
- Buchenholzarbeitsplatte mit Profilen eingefasst
- Verkleidung aus in der Nut eingelegtem Verbundmaterial
- Borde und Tür aus Vollkunststoffplatten
- Rechneraufnahme unter der Tischplatte

**Laboratory Furniture**

- made from standard profiles
- back structure made from R 40 / 80 45° profile
- canopy with halogen down lights
- constructed from 40 x 40 corner profile
- using central fastener miter connector
- compressed air electricity supplied via ducting profile 80 x 80
- beech work surface inlaid in table profiles
- Alucobond® panels supported in the profile t-slots
- shelves can be integrated into the design of furniture
- computer shelves can be integrated into the design of furniture



**Schreibtisch mit Monitorarm**

- hergestellt aus zusammengesetzten, runden Profilen mit dreiseitig eingefasster Holzarbeitsplatte

**Desk With Monitor Support**

- made from curved and table profiles with inlaid polished work surfaces

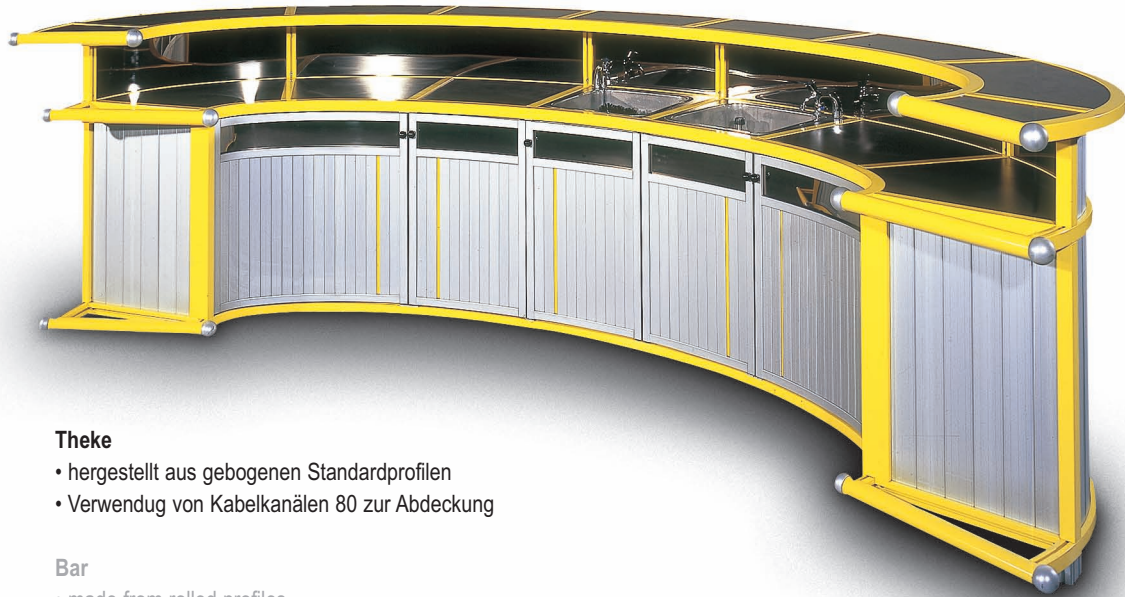


**Schreibtisch**

- hergestellt aus zweiseitig geschlossenen Profilen
- verchromte Profile
- Arbeitsplatte und Ablageplatte aus Glas

**Desk**

- made from closed profiles
- chrome-plated
- glass work surface and shelf

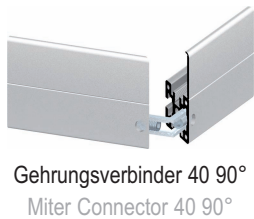
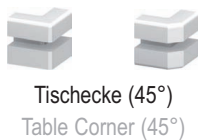
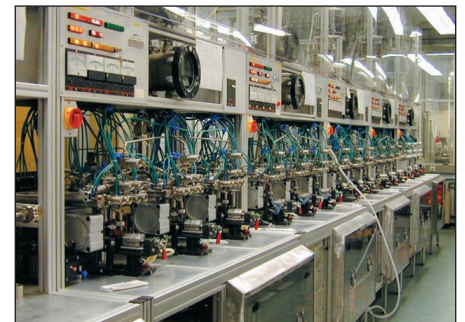


**Theke**

- hergestellt aus gebogenen Standardprofilen
- Verwendung von Kabelkanälen 80 zur Abdeckung

**Bar**

- made from rolled profiles
- using wiring duct 80 for covering



mit Nut  
grooved



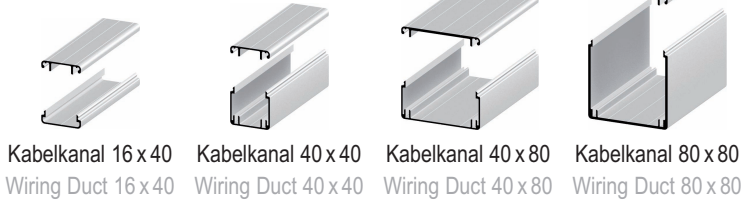
ohne Nut  
non-grooved



**Haltwinkel**  
**Support Angles**



**40** Kabelkanäle, Drehgelenke  
 Wiring Ducts, Swivel Arms



**40** Pneumatik  
 Pneumatics



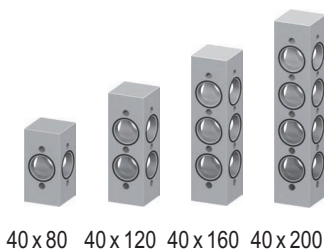
**Pneumatik-Verbindungsblöcke**  
 Pneumatic Joining Plates



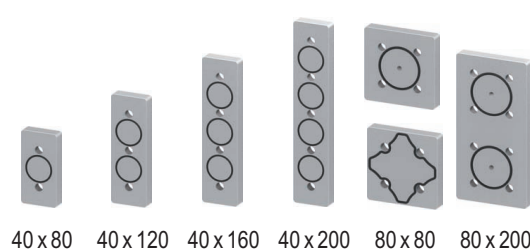
**Pneumatik-Abschlussblöcke**  
 Pneumatic End Connectors



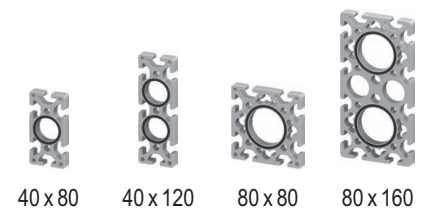
**Pneumatik-T-Verbinder**  
 Pneumatic T-Connectors



**Pneumatik-Kreuzverbinder**  
 Pneumatic Cross Connectors



**Pneumatik-Endplatten**  
 Pneumatic End Plates



**Pneumatik-T-Verbinder**  
 Pneumatic T-Connectors





**Systemaufbau**

- präzise Aluminiumprofile
- harte Profile durch spezielle Legierungen
- keine Bearbeitung der Oberfläche des Profils
- kostengünstiges System
- verwindungssteifes System
- Verbindungen über Passplatten oder Verstiftungen fixiert
- stabiles, umfangreiches Verbindungssystem
- abgestimmtes Zubehör

**Erforderliche Bohrungen**

- Profile nur mit erforderlichen Bohrungen versehen
- keine Schwächung des Profils durch ungenutzte Bohrung
- geringere Kosten
- saubere Oberflächen, keine Verschmutzung des Systems
- Enden des Profils werden mit Abdeckkappen versehen

**Komplettbearbeitung**

- Profile komplett mit Rasterbohrungen versehen
- stirnseitige Bearbeitung zur präzisen Positionierung mit Passplatten
- stets verfügbare Lagerware

**System Structure**

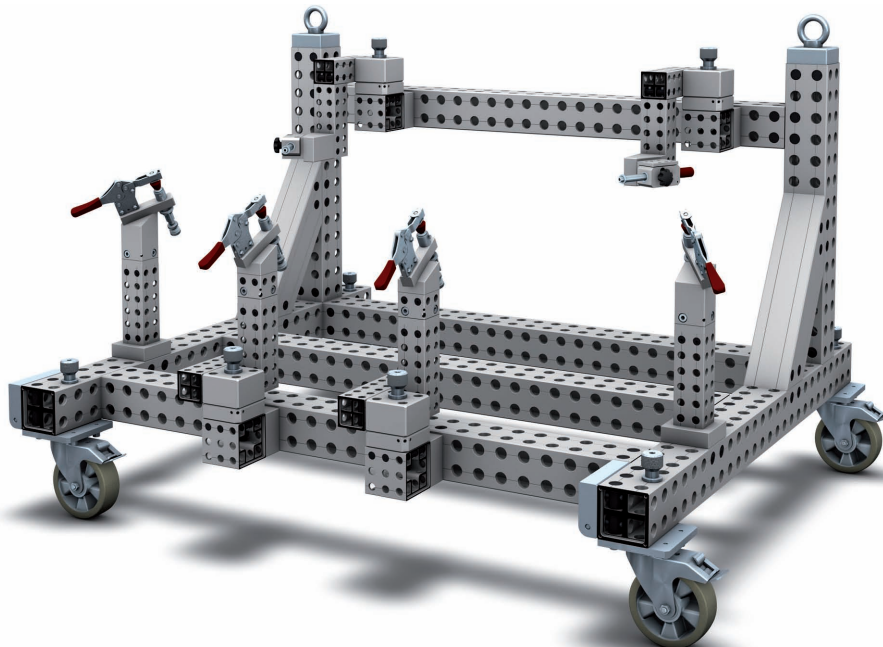
- precise aluminum profiles
- hardened profiles by special alloys
- no treatments required for the profile surface
- cost-effective system
- non-twisting system
- connections via plates or pins
- robust, wide ranging connection system
- tailored accessories

**Required Holes**

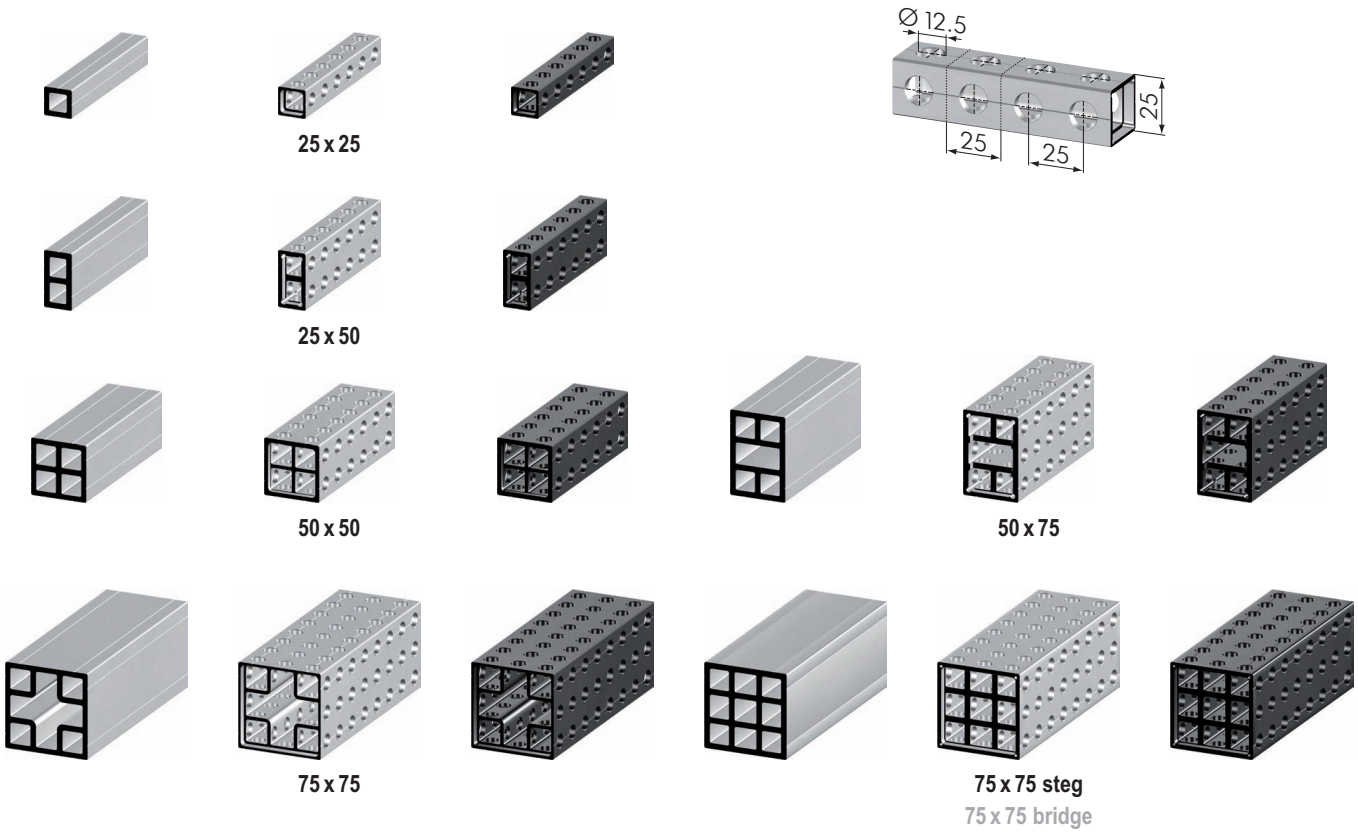
- profiles available with only specifically required drilled precision holes
- no weakening of the profile as a result of unused holes
- lower costs
- clean, smooth surface, no collection points for dirt and dust
- profiles are equipped with end caps

**Complete Machining**

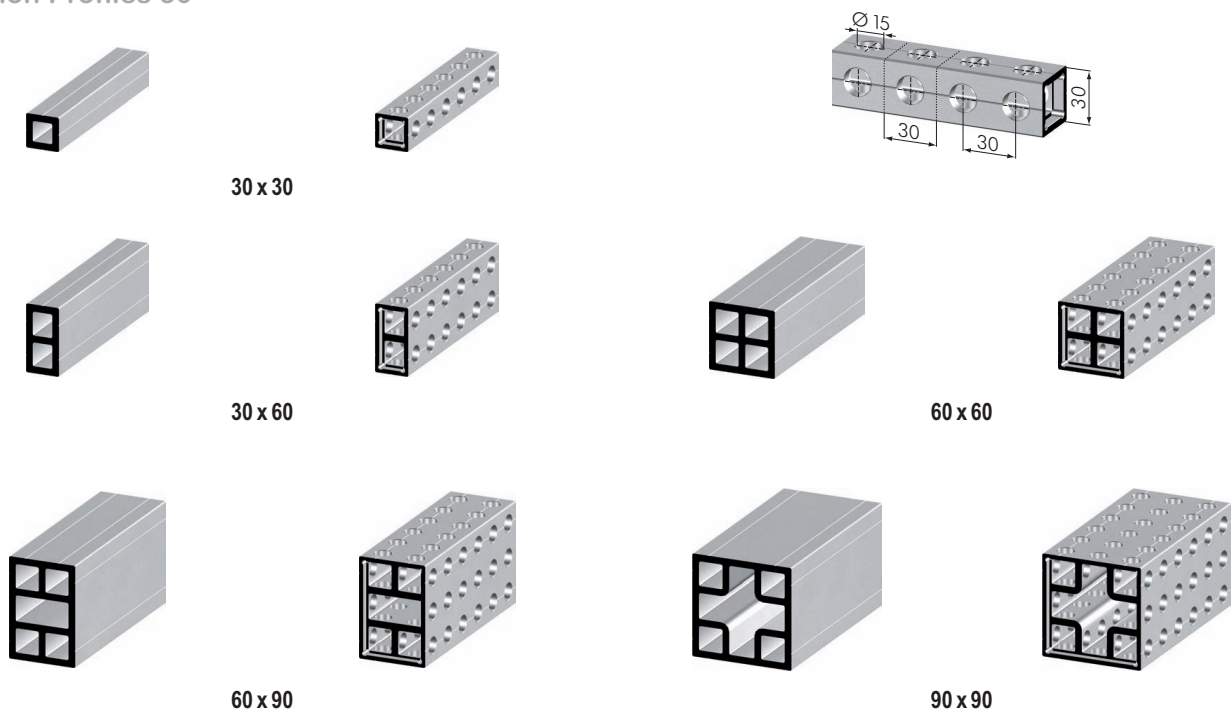
- profiles are drilled completely with precision holes
- top end processing for precise positioning with mounting plates
- always available from stock



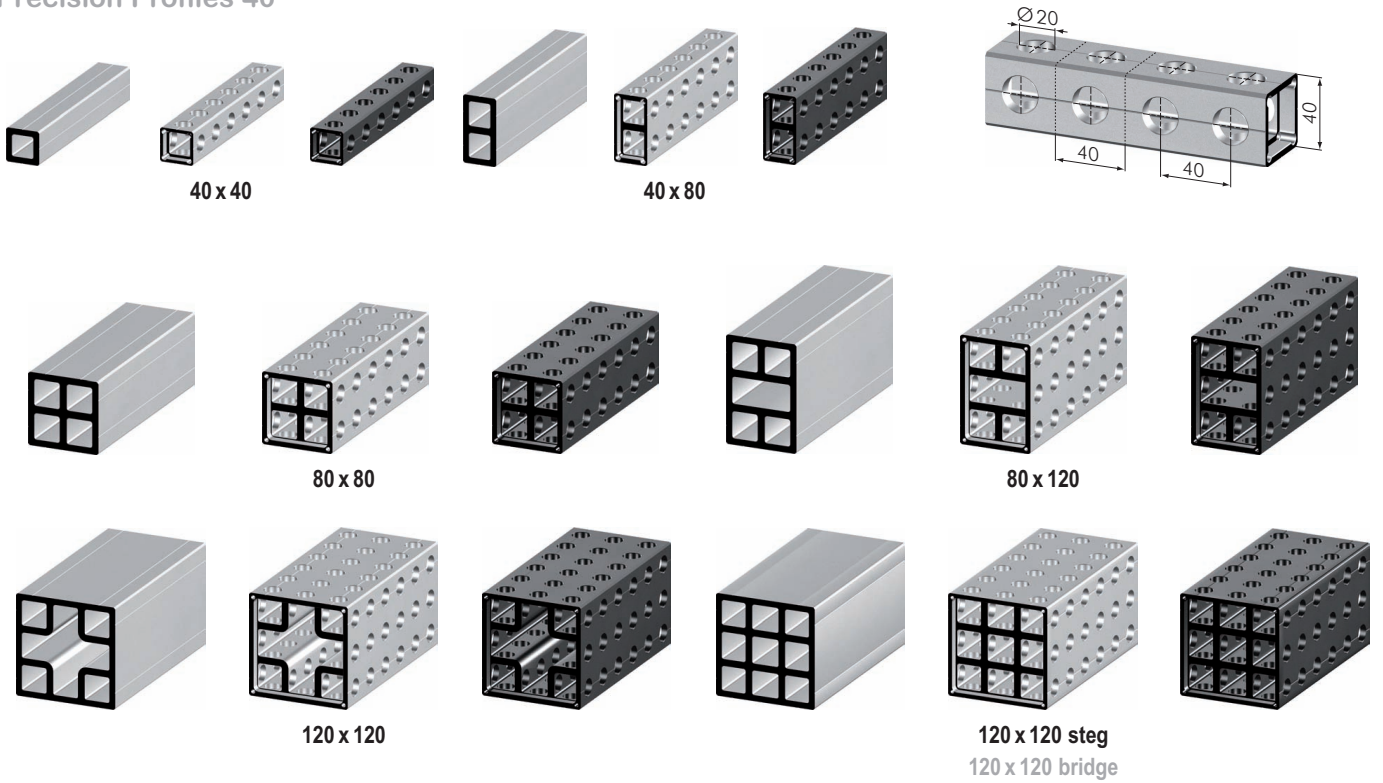
**Präzisionsprofile 25**  
 Precision Profiles 25



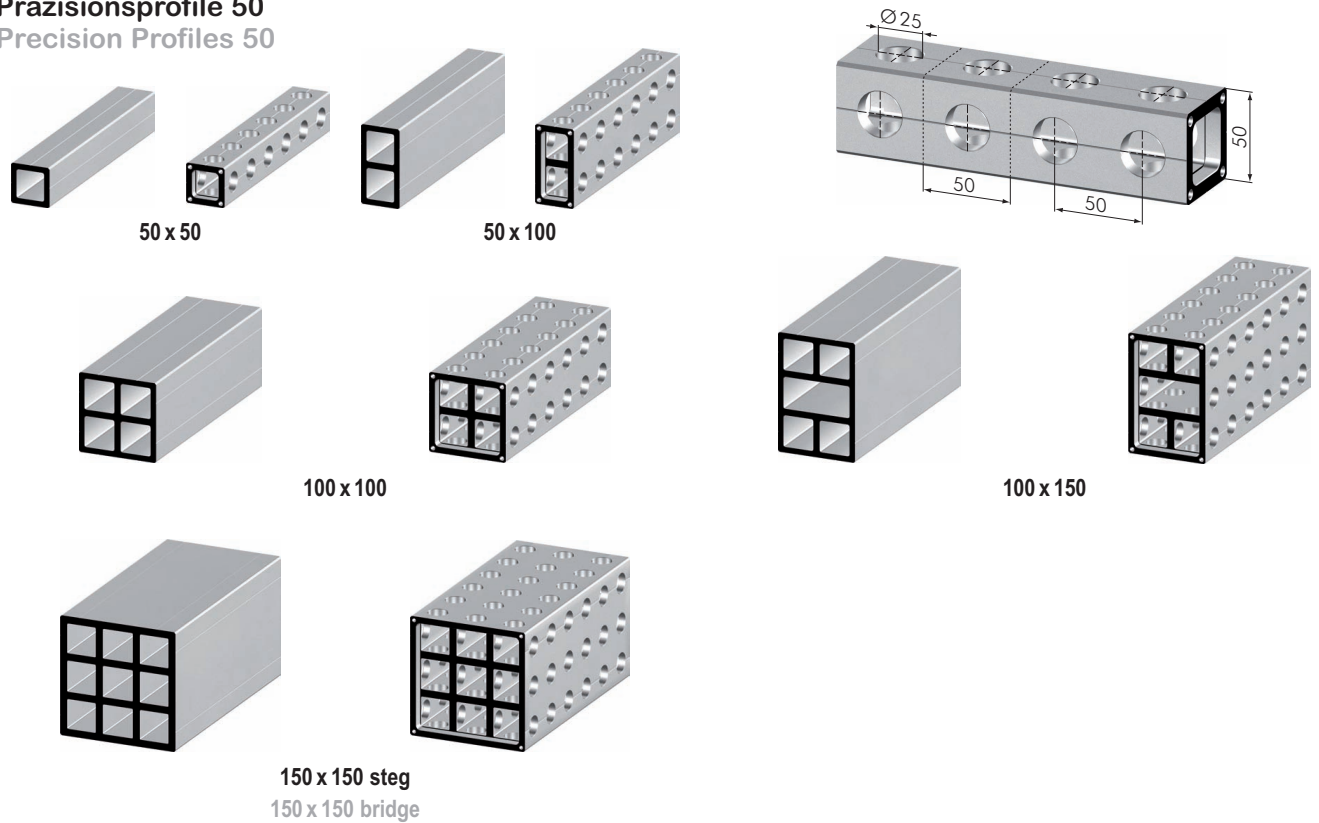
**Präzisionsprofile 30**  
 Precision Profiles 30



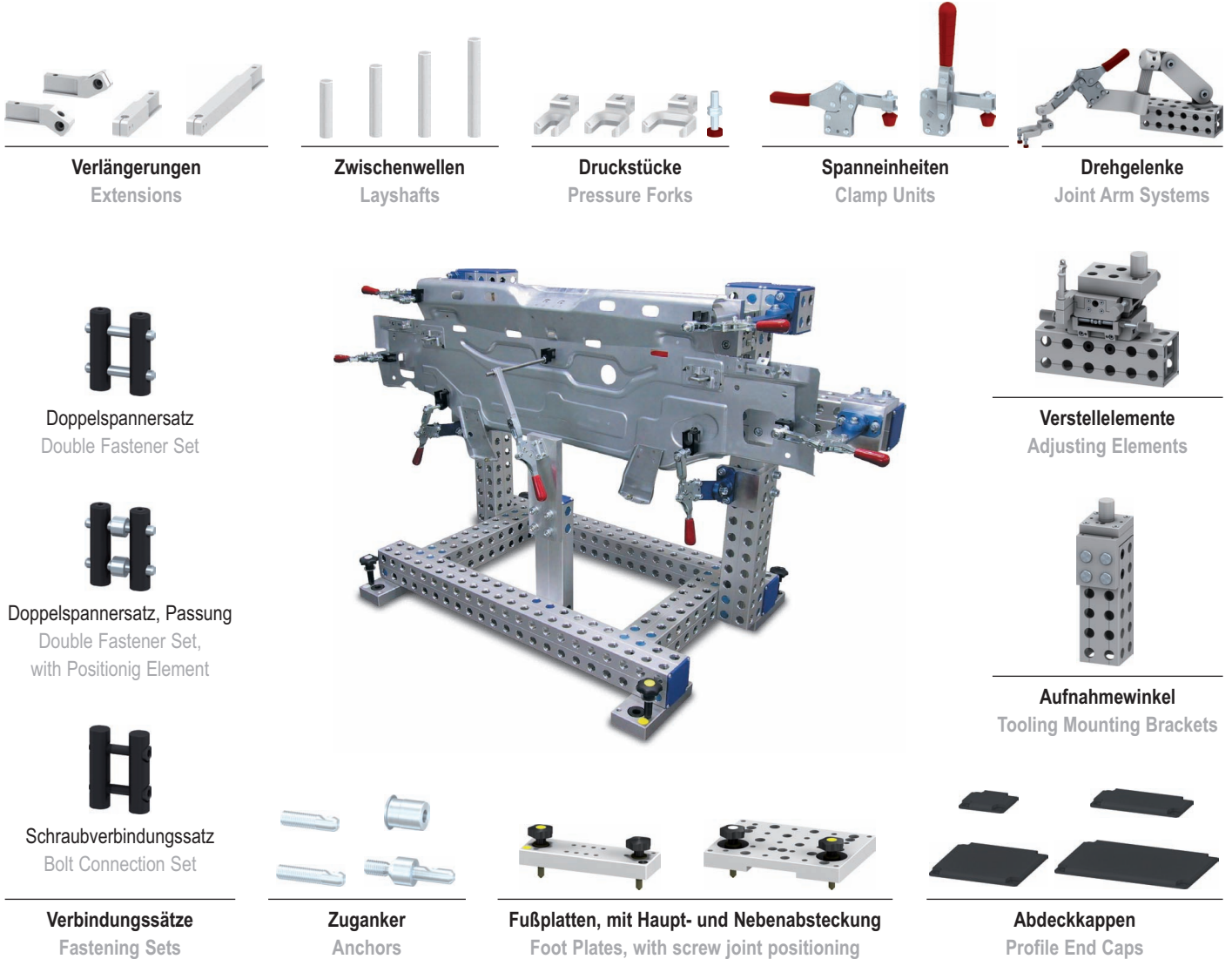
**Präzisionsprofile 40**  
 Precision Profiles 40



**Präzisionsprofile 50**  
 Precision Profiles 50







**Verlängerungen**  
Extensions

**Zwischenwellen**  
Layshafts

**Druckstücke**  
Pressure Forks

**Spanneinheiten**  
Clamp Units

**Drehgelenke**  
Joint Arm Systems

**Doppelspannersatz**  
Double Fastener Set

**Verstellelemente**  
Adjusting Elements

**Doppelspannersatz, Passung**  
Double Fastener Set,  
with Positioning Element

**Aufnahmewinkel**  
Tooling Mounting Brackets

**Schraubverbindungsatz**  
Bolt Connection Set

**Zuganker**  
Anchors

**Fußplatten, mit Haupt- und Nebenabsteckung**  
Foot Plates, with screw joint positioning

**Abdeckkappen**  
Profile End Caps

**Verbindungsätze**  
Fastening Sets



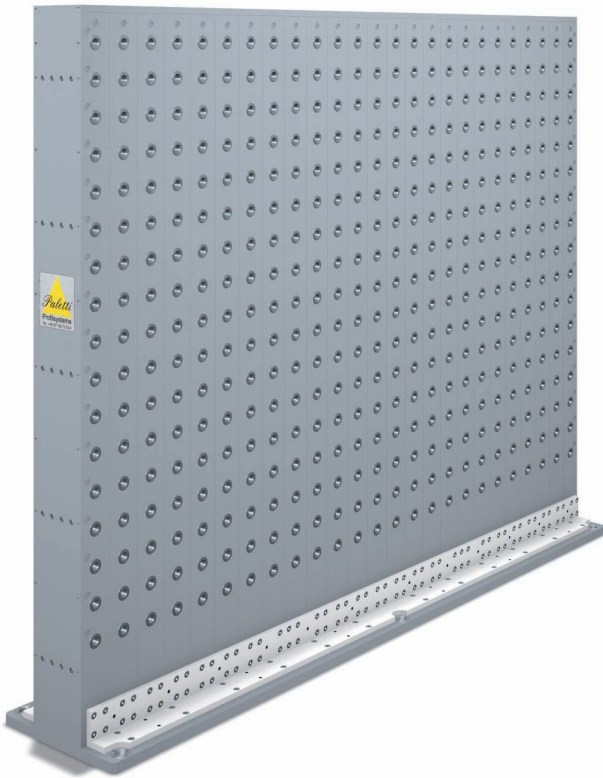
Messzentrum zur Einrichtung und Einmessung von Vorrichtungen und Messaufnahmen sowie der allgemeinen Qualitätskontrolle der von uns hergestellten Bauteile

Measuring Center for adjustment and initial measurement of rigs and measuring devices as well as for the general quality control of prefabricated parts of ours.

Messbereich: x: 6.000 mm  
 y: 2.700 mm (2x 1.350 mm)  
 z: 2.000 mm  
 Tastkopf: 2 x RST inkl. DSE stufenlos

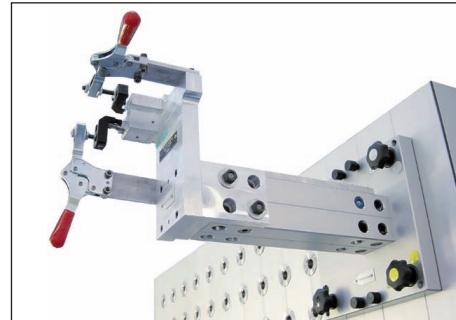
metering range: x: 6,000 mm  
 y: 2,700 mm (2x1,350 mm)  
 z: 2,000 mm  
 feeler head: 2 x RST incl. DSE stepless





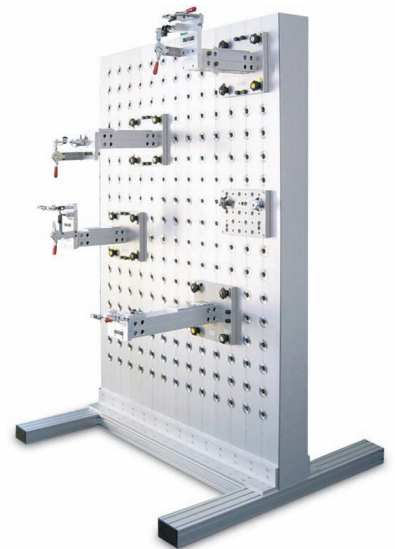
Rasterung, Stärke und Aufnahme inklusive VA Einsätzen nach Kundenwunsch. Die Platten sind in den Rastermaßen 100 x 100 und 200 x 200 lieferbar.

Matrix, thickness and ball points with stainless-steel inserts to customer specifications. The plates are available with 100 x 100 or 200 x 200 matrix.

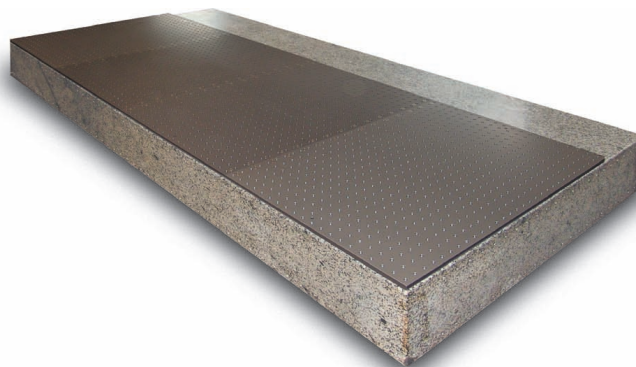


Kombifußplatten mit Schraubbolzen und Ständerprofil.

Adapter foot plates with bolts and stand profile.



**Lochrasterplatten**  
 Matrix Plates



Rasterung, Stärke und Aufnahme inklusive VA Einsätzen nach Kundenwunsch.

Matrix, thickness and ball points with stainless-steel inserts to customer specifications.

**Grundrasterplatten**  
 Matrix Base Plates



25 x 50 x 75, ± 13.5 mm



40 x 80 x 120, ± 22 mm

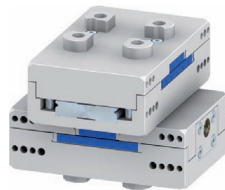


50 x 100 x 150, ± 27.5 mm

**Rollenschlitten, mit Gewindespindel**  
 Roller Slides, with screw spindle



50 x 75 x 75, ± 13.5 mm



80 x 120 x 120, ± 22 mm



100 x 150 x 150, ± 27.5 mm

**Kreuzrollenschlitten, mit Gewindespindel**  
 Cross Roller Slides, with screw spindle



25 x 50 x 75, ± 13.5 mm



40 x 80 x 120, ± 22 mm

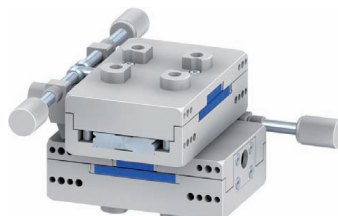


50 x 100 x 150, ± 27.5 mm

**Rollenschlitten, schwimmend gelagert**  
 Roller Slides, floating



50 x 75 x 75, ± 13.5 mm



80 x 120 x 120, ± 22 mm



100 x 150 x 150, ± 27.5 mm

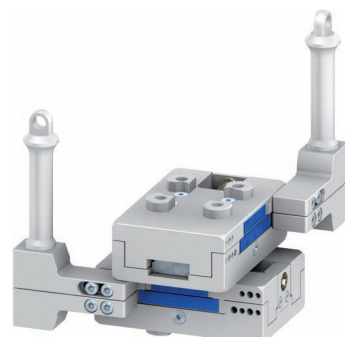
**Kreuzrollenschlitten, schwimmend gelagert**  
 Cross Roller Slides, floating



50 x 75 x 75, ± 3 mm



80 x 120 x 120, ± 3 mm



**Linearschlitten und Kreuzlinearschlitten, Gewindespindel**  
 Linear Slide and Cross Linear Slide, with screw spindle



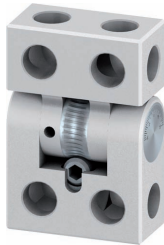
Doppelgelenk 25 x 50 x 75  
Double Hinge 25 x 50 x 75



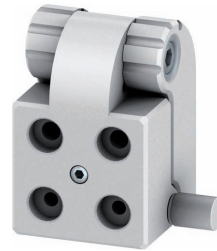
Doppelgelenk 25 x 50 x 125  
Double Hinge 25 x 50 x 125



Gelenk 50 x 50 x 75, absteckbar  
Hinge 50 x 50 x 75, with locking pin



Doppelgelenk 40 x 80 x 120  
Double Hinge 40 x 80 x 120



Doppelgelenk 80 x 80 x 120  
Double Hinge 80 x 80 x 120



Gelenke und Doppelgelenke  
Hinges and Double Hinges



DEA-FIVE-Adapter, Schnellverschluss  
DEA FIVE Adapter, quick release fastener



DEA-FIVE-Adapter, Aufnahme Profil 50 x 50  
DEA FIVE Adapter, profile 50 x 50 admittance



Wechseinheit, oben  
Change-Over Unit, top



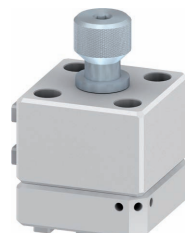
Wechseinheit-Schraube  
Change-Over Unit Screw



Klapprolle  
Hinge Castor



Wechseinheit, unten  
Change-Over Unit, bottom

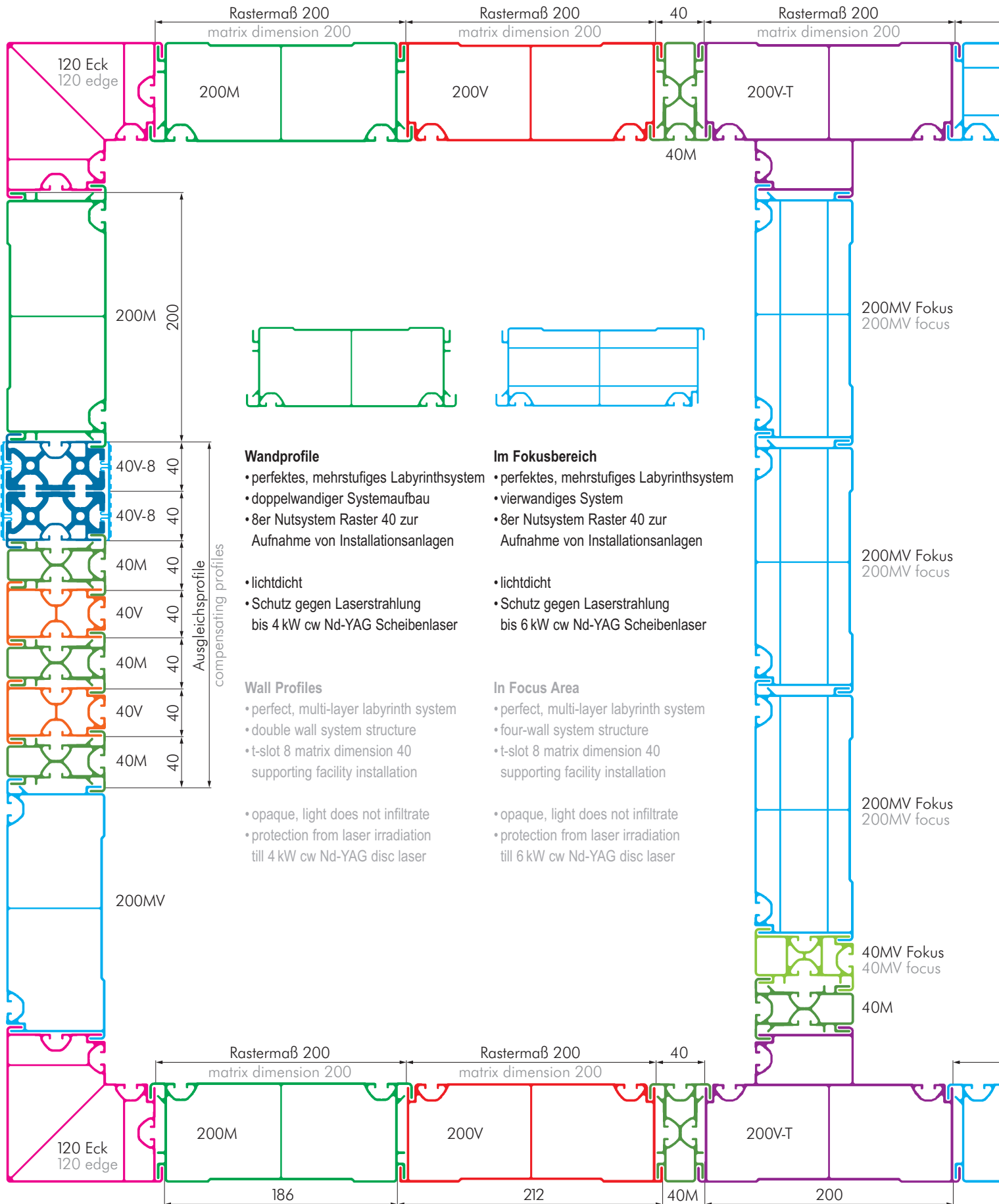


Für umfassende  
Informationen fordern  
Sie bitte den Präzi-  
sionskatalog an!

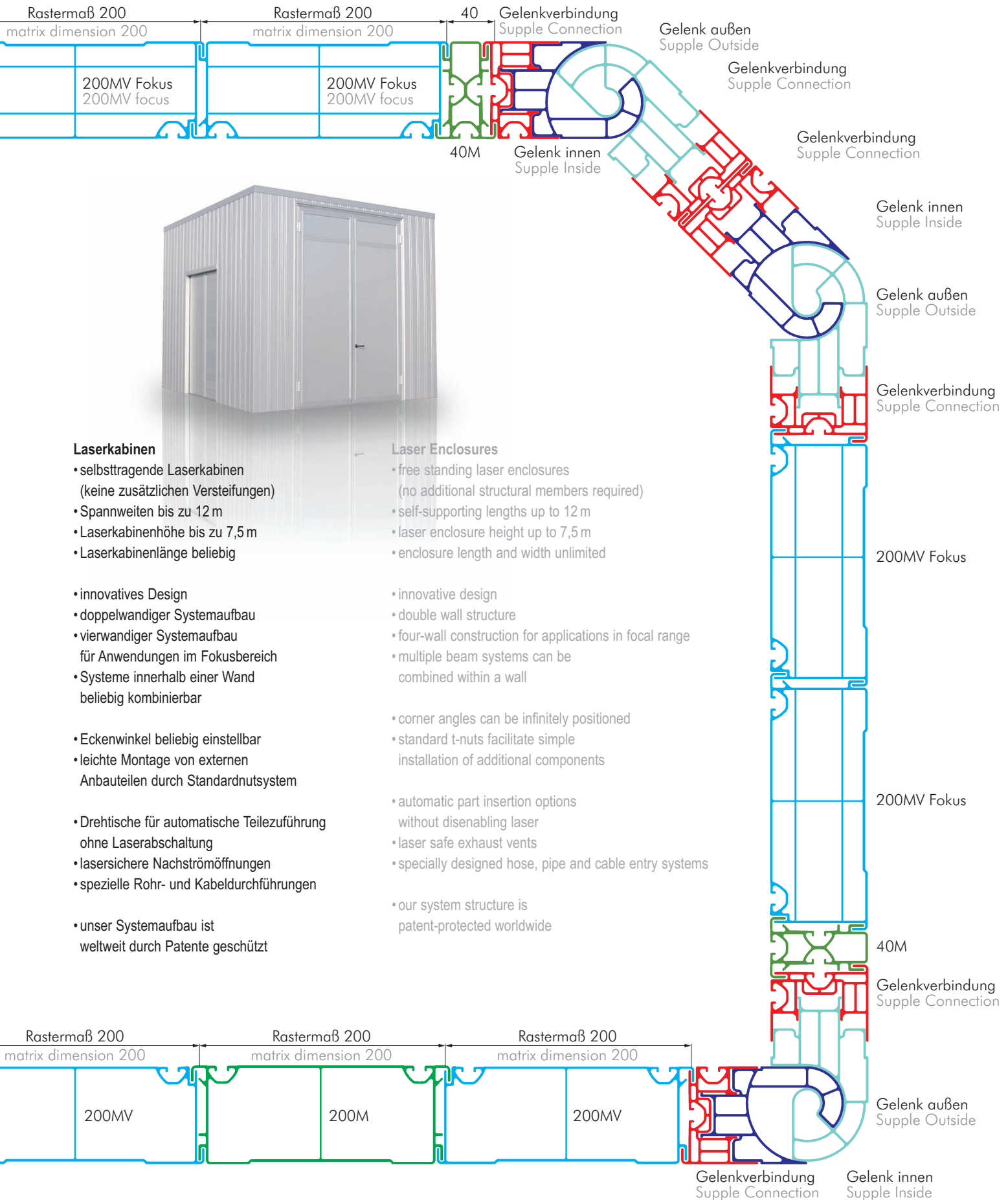
For complete informa-  
tion, please order the  
precision catalog!



Werkzeugwagen, mit Rasterplatte 1400 x 1200  
Tool Trolley, with Matrix Plate 1400 x 1200







**Laserkabinen**

- selbsttragende Laserkabinen (keine zusätzlichen Versteifungen)
- Spannweiten bis zu 12 m
- Laserkabinenhöhe bis zu 7,5 m
- Laserkabinenlänge beliebig
- innovatives Design
- doppelwandiger Systemaufbau
- vierwandiger Systemaufbau für Anwendungen im Fokusbereich
- Systeme innerhalb einer Wand beliebig kombinierbar
- Eckenwinkel beliebig einstellbar
- leichte Montage von externen Anbauteilen durch Standardnutsystem
- Drehtische für automatische Teilezuführung ohne Laserabschaltung
- lasersichere Nachströmöffnungen
- spezielle Rohr- und Kabeldurchführungen
- unser Systemaufbau ist weltweit durch Patente geschützt

**Laser Enclosures**

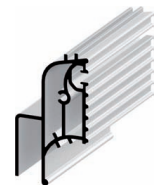
- free standing laser enclosures (no additional structural members required)
- self-supporting lengths up to 12 m
- laser enclosure height up to 7,5 m
- enclosure length and width unlimited
- innovative design
- double wall structure
- four-wall construction for applications in focal range
- multiple beam systems can be combined within a wall
- corner angles can be infinitely positioned
- standard t-nuts facilitate simple installation of additional components
- automatic part insertion options without disabling laser
- laser safe exhaust vents
- specially designed hose, pipe and cable entry systems
- our system structure is patent-protected worldwide



**Segmenttor**  
Segment Door



Segmenttorprofil 120 x 42,5  
Segment Door Profile 120 x 42.5



Segmenttorprofil 120 x 66,5  
Segment Door Profile 120 x 66.5



Segmenttorprofil 80 x 42,5  
Segment Door Profile 80 x 42.5



Zahnriemenklemmprofil  
Timing Belt Clamp Profile

**Segmenttorprofile**  
Segment Door Profiles



**Hubtor**  
Vertical Lift Door

Die Motoranbindung erfolgt wahlweise oben oder unten.  
The motor connection is either up or down.



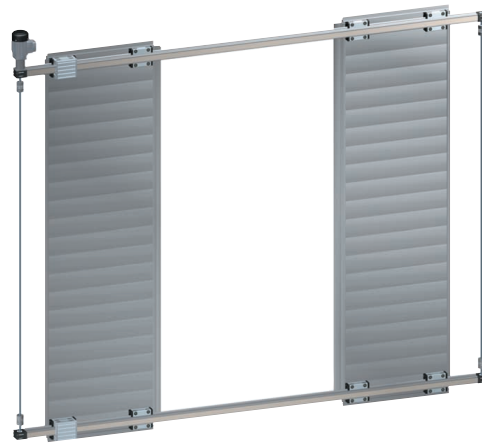
**Hubtor, 1 Segment**  
Vertical Lift Door, 1 segment



**Hubtor, 2 Segmente**  
Vertical Lift Door, 2 segments



**Hubtor, 3 Segmente**  
Vertical Lift Door, 3 segments



**Schiebetor**  
Sliding Door Gate



**Wartungstür**  
Maintenance Door

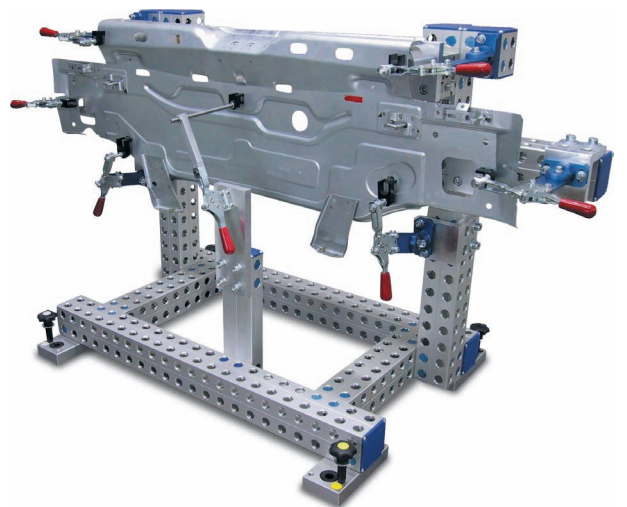
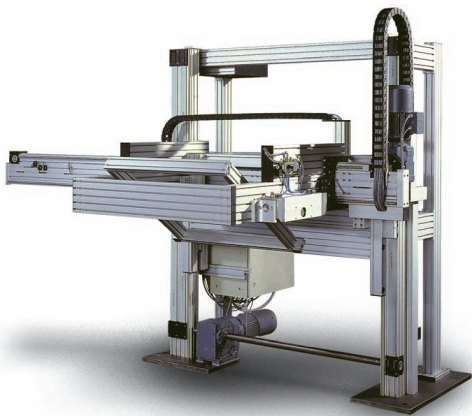
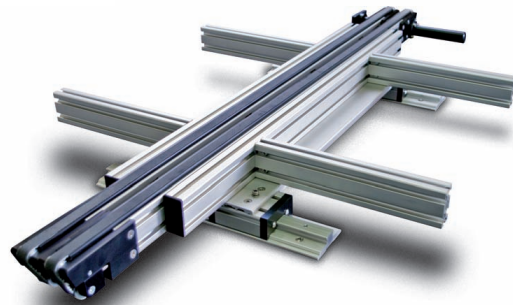


**Wartungsdoppeltür**  
Maintenance Double Door



**Wartungsdoppeltür mit Innentür**  
Maintenance Double Door with Internal Door





**Paletti Profilsysteme GmbH & Co. KG**

Gewerbepark Meißen 17  
D - 32423 Minden  
Tel.: +49 (5 71) 38 73 03 - 0  
Fax: +49 (5 71) 3 69 97  
e-Mail: sales@paletti.de  
Website: http://www.paletti.de

**Paletti USA LLC**

119 Keystone Drive  
USA - Montgomeryville, PA 18936  
Tel.: +1 (267) 2 89 00 20  
Fax: +1 (267) 2 89 00 23  
e-Mail: sales@palettiusa.com

**Boldman Ltd.**

4 Britannia Way  
The Valley  
GB - Bolton  
Lancashire BL2 2HH  
Tel.: +44 (12 04) 52 21 23  
Fax: +44 (12 04) 52 21 01  
e-Mail: info@boldman.co.uk

**Vertretungen  
Representatives****IPS-tec GmbH**

Poststraße 1  
D - 08459 Neukirchen  
Tel.: +49 (37 62) 7 09 98 04  
Fax: +49 (37 62) 9 11 21  
e-Mail: info@ips-tec.de

**IPS-tec GmbH**

Höllsterstraße 13  
D - 73252 Lenningen  
Tel.: +49 (70 26) 6 01 96 80  
Fax: +49 (70 26) 6 01 96 82  
e-Mail: info@ips-tec.de

**Mecano Sistemi S.r.l.**

Via Maestri del Lavoro № 1  
I - 21047 Saronno (VA)  
Tel.: +39 (0 29) 6 70 90 50  
Fax: +39 (0 29) 6 70 93 96  
e-Mail: mecanosistemi@tin.it

**Promatec Automation AG**

Gewerbestraße 9  
CH - 4552 Derendingen  
Tel.: +41 (32) 6 82 00 82  
Fax: +41 (32) 6 82 00 89  
e-Mail: info@promatec.ch

**Promec**

Bietenweg 16  
B - 3300 Tienen  
Tel.: +32 (16) 82 45 91  
Fax: +32 (16) 82 45 92  
e-Mail: promec@skynet.be

**Baccara Automation Control**

IL - 18915 Kvutzat Geva  
Israel  
Tel.: +9 72 (4) 6 53 59 60  
Fax: +9 72 (4) 6 53 14 45  
e-Mail: sales@baccara.co.il

**Marand Precision Engineering Pty. Limited**

153 Keys Road  
AUS - 3189 Moorabbin  
Melbourne, Victoria  
Tel.: +61 (3) 85 52 06 00  
Fax: +61 (3) 85 52 06 05  
e-Mail: sales@marand.com.au

**MMT s.r.o.**

Revoluční 40  
CZ - 46601 Jablonce nad Nisou  
Tel.: +4 20 (4 83) 38 89 98  
Fax: +4 20 (4 83) 38 85 51  
e-Mail: mmt@mmt.cz

**Altitech APS**

Erhvervsparken 10  
DK - 4621 Gadstrup  
Tel.: +45 (70 20) 11 16  
Fax: +45 (70 20) 11 14  
e-Mail: info@altitech.dk

**Combiflex Produktie & Montage B.V.**

Merwedeweg 7 (4)  
NL - 3621 LP Breukelen  
Tel.: +31 (3 46) 26 41 74  
Fax: +31 (3 46) 26 47 74  
e-Mail: info@trapo.nl

**Texo Application AB**

Stallgatan 2  
S - 34324 Älmhult  
Tel.: +46 (4 76) 50 20 70  
Fax: +46 (4 76) 5 60 92  
e-Mail: info@texoapplication.se

**Multiengineering ET**

1113 Sofia  
bul. Tsarigradsko sh. 72 (BAN - NPO)  
Tel.: +35 9 (0) 28 75 21 09  
Fax: +35 9 (0) 28 75 21 09  
e-Mail: multiengineering@gmail.com